



*City of Clare,
Michigan*

*Master Plan for
Parks and Recreation
2010-2015*



February, 2010

Contents

Chapter 1: Overview of the Planning Process	6
Chapter 2: The Community	7
Location	7
History	8
Demographics	9
Population Trends	11
Economics.....	11
Chapter 3: Organization and Administration	13
Organization	13
Working Relationships	14
Funding.....	15
Chapter 4: Park and Recreation Inventory.....	17
City of Clare Parks.....	18
Trails.....	22
Clare Public School Facilities.....	26
Other Recreation Resources.....	27
Private Recreation Service Providers.....	27
Nearby Recreation Resources.....	28
City of Harrison (15 miles north of Clare).....	28
Village of Farwell (5 miles west of Clare).....	28
Isabella County (south of Clare County)	28
City of Mt. Pleasant (15 miles south of Clare)	28
Clare County and Townships.....	29
Status of all DNR Grant-Assisted Park and Recreation Projects.....	29
Recreation Programs and Services	30
City of Clare Parks and Recreation.....	30
Recreation Programs and Services Provided by Other Organizations.....	31
Standards Analysis.....	32
Park Land Standards	32
Recreation Activity Area Standards.....	33

Chapter 5: Park Accessibility	35
Methods	35
Recommendations.....	37
Chapter 6: Public Participation.....	38
Public Meeting.....	38
Methods	38
Results.....	41
Recommendations.....	41
Other Program Ideas	42
Public Survey.....	43
Methods	43
Results.....	43
Chapter 7: Goals and Objectives	49
Review of 2005– 2010 Goals, Objectives, and Strategies	49
2010 – 2015 Goals and Objectives	52
Chapter 8: Action Plan.....	54
Appendices	56
Appendix A: List of Students	57
Appendix B: Public Meeting Announcement.....	58
Appendix C: Letter of Invitation and Mailing List.....	59
Appendix D: Survey	63
Additional Documents for Completion and Approval of Plan	67
Minutes from Advisory Board Recommending Plan Approval to City Commission	68
Notice of Availability of Draft Plan and Public Meeting	70
Proof of Publication for Notice of Availability of Draft Plan and Public Meeting	71
Minutes from the Public Meeting and Plan Approval by City Commission	72
Resolution 2010 – 015, Approving Five Year Master Plan.....	79
Final Plan Submission Letters to County and Regional Planning Agencies	80
Community Park, Recreation, Open Space and Greenway Plan Certification Checklist	83

Figure 1: Location Map, City of Clare	8
Figure 2: Clare Public Schools District Map.....	10
Figure 3: City of Clare Organizational Chart.....	13
Figure 4: Location Map of Clare City Parks	17
Figure 5: Brookwood Athletic Complex	26
Figure 6: Clare Public Schools Facilities	26
Figure 7: Public Meeting Focus Statement	39
Figure 8: Initial Project Listing (in no particular order).....	39
Figure 9: Revised Project List	40
Figure 10: Project List Final Voting.....	40

Table 1: Population of Clare County 2000 – 2007.....	12
Table 2: Property Tax and Fee Revenue 2004 – 2009	15
Table 3: Parks and Recreation Budget	16
Table 4: City of Clare Parks and Recreation FacilitiesInventory.....	23
Table 5: Clare Public School Facilities	25
Table 6: Other Recreation Resources in Clare	27
Table 7: Park Land Area Standards.....	33
Table 8: Activity Area Standards	33
Table 9: Park AccessibilityAssessment.....	36
Table 10: Park Use by Household Type.....	44
Table 11: Parks Used During Past Year by Household.....	44
Table 12: Priorities for New Recreation Facilities	45
Table 13: Resident Opinions about Clare Parks.....	46
Table 14: Recreation Programs and Services Preferences	47
Table 15: Sources of Information.....	48
Table 16: Status of 2005 – 2010 Park Goals	49
Table 17: Status of 2005 – 2010 Recreation Goals	51
Table 18: Status of 2005 – 2010 Trail Goals.....	51
Table 19: 2010 – 2015 Action Plan.....	54

ACKNOWLEDGMENTS

This planning process could not have happened without the leadership and participation of numerous city officials, community leaders, and, particularly, citizens of Clare. In particular, we would like to recognize the following individuals for their efforts:

Parks and Recreation
Advisory Board

Mr. Bill Carlson
Ms. Kelly Koch
Ms. Marian Matyn
Ms. Rose Michels
Mr. Doug Randle
Mr. Jon Ringelberg
Ms. Carol Santini

City Manager

Mr. Ken Hibl

City Parks & Recreation Director

Ms. Amanda Green

CMU Recreation Students

Students from Central Michigan University's Department of Recreation, Parks & Leisure Services Administration, enrolled in RPL 420, Comprehensive Planning and Design for Leisure, under the supervision of Dr. Al Ellard. Groups of students were engaged in much of the assessment process, gathering information for inclusion in the master plan document, and making recommendations to the Parks & Recreation Board. For a list of students, see Appendix A.

Report Prepared by

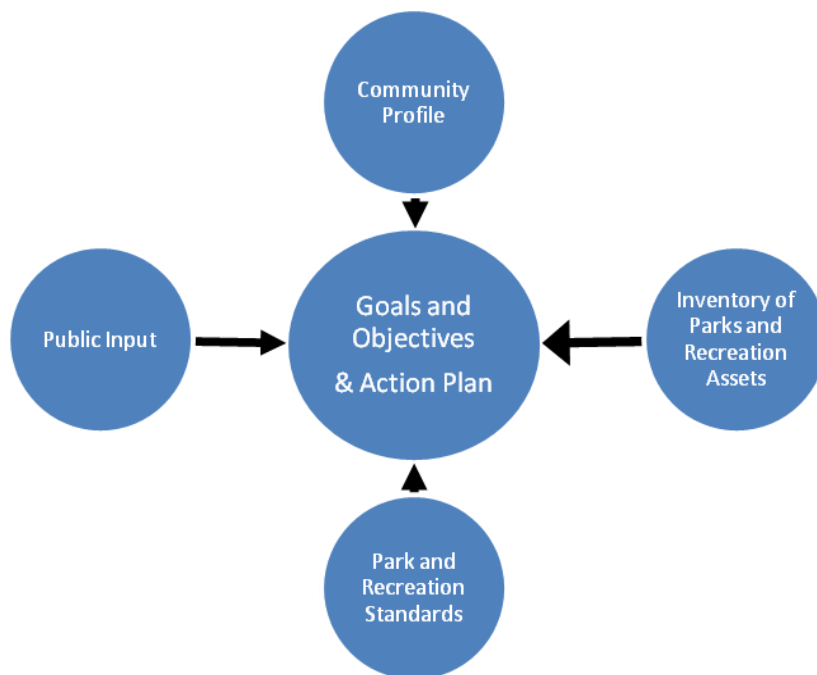
Dr. Al Ellard, Professor
Recreation, Parks & Leisure Services Admin.
Central Michigan University
989-774-4471
al.ellard@cmich.edu

Chapter 1: Overview of the Planning Process

Preparation to conduct the master planning process began in fall, 2008. Dr. Al Ellard, associate professor of Parks, Recreation & Leisure Services Administration at Central Michigan University offered the services of students enrolled in RPL 420; *Comprehensive Planning and Facility Design for Leisure* during the spring, 2009 semester to conduct the planning process as a learning experience in conjunction with the class. Students in the class were organized in groups and charged with gathering, analyzing, and reporting data related to the planning process. Dr. Ellard edited and prepared the final document.

The revision of the City of Clare master plan for parks and recreation began in January 2009. The planning process was designed to include information from multiple sources using various means of data collection consistent with the purpose of the master planning process.

All data collection took place during January, February, and March, 2009. Students made numerous trips to Clare to evaluate and inventory park facilities and to conduct the public meeting. On April 23, 2009, students made a presentation of their findings to the Parks and Recreation Board.



Chapter 2: The Community

This plan has been prepared for the City of Clare, Michigan. Prior to the 2005 master plan, the focus of planning was on the acquisition and development of parks and recreation areas for use by residents and non-residents. Beginning with the 2005 master plan, the City of Clare expanded the scope of the planning process to include planning for the delivery of recreation programs and services to the community. Also, because of the strategic location of the city along the Pere Marquette Rail Trail, the City continues to address planning for the ultimate expansion and completion of the rail trail project through to the western city boundary.

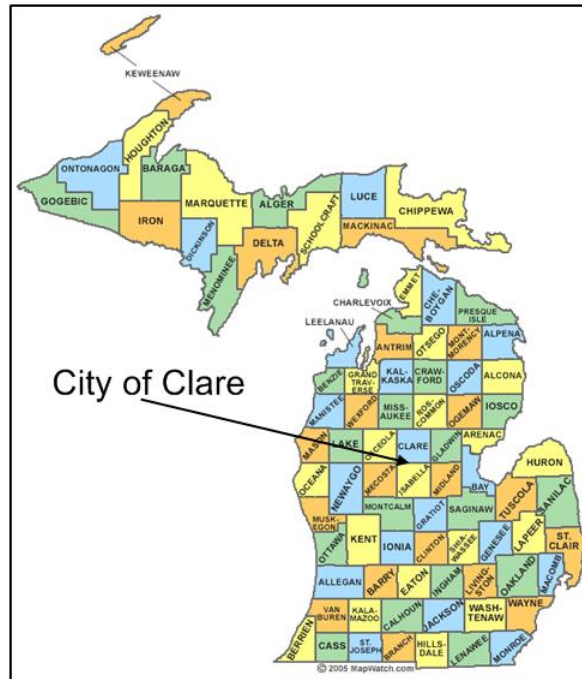
Location

The City of Clare, Michigan is located in Clare County at the intersection of U.S. Highway 127 and U.S. Highway 10, approximately 80 miles north of Lansing and 30 miles west of Midland, MI (See Figure 1).

The City of Clare, Michigan is located in the central part of the lower peninsula of Michigan; often referred to as the “middle-of-the-mitt.” The City of Clare is located on the southern edge of Clare County and the northern edge of Isabella County. Clare County, also known as the Gateway to the North, is located at the convergence of the relatively flat agricultural southern part of Michigan and the hill country leading to Michigan’s “High Plains” area.

The location of Clare at the intersection of U.S. Highway 127 and U.S. Highway 10 make it a funnel point for much traffic traveling to Michigan’s North Country. Traffic is so significant that the state of Michigan operates a Michigan Welcome Station on U.S. 127 at Clare (Figure 1).

Figure 1: Location Map, City of Clare



History

The area around Clare was initially settled during Michigan's logging era that followed the Civil War. Michigan's pine timber became important as the supply of trees in the northeast was exhausted. By 1880, Michigan was producing as much lumber as the next three states combined. The growth of the logging industry in this part of Michigan was accompanied by the growth of the railroads. Clare was founded during the early 1870's, when the Pere Marquette Railroad built a station here during the lumber boom. Clare was incorporated into a village in 1879 and later as a city in 1891.



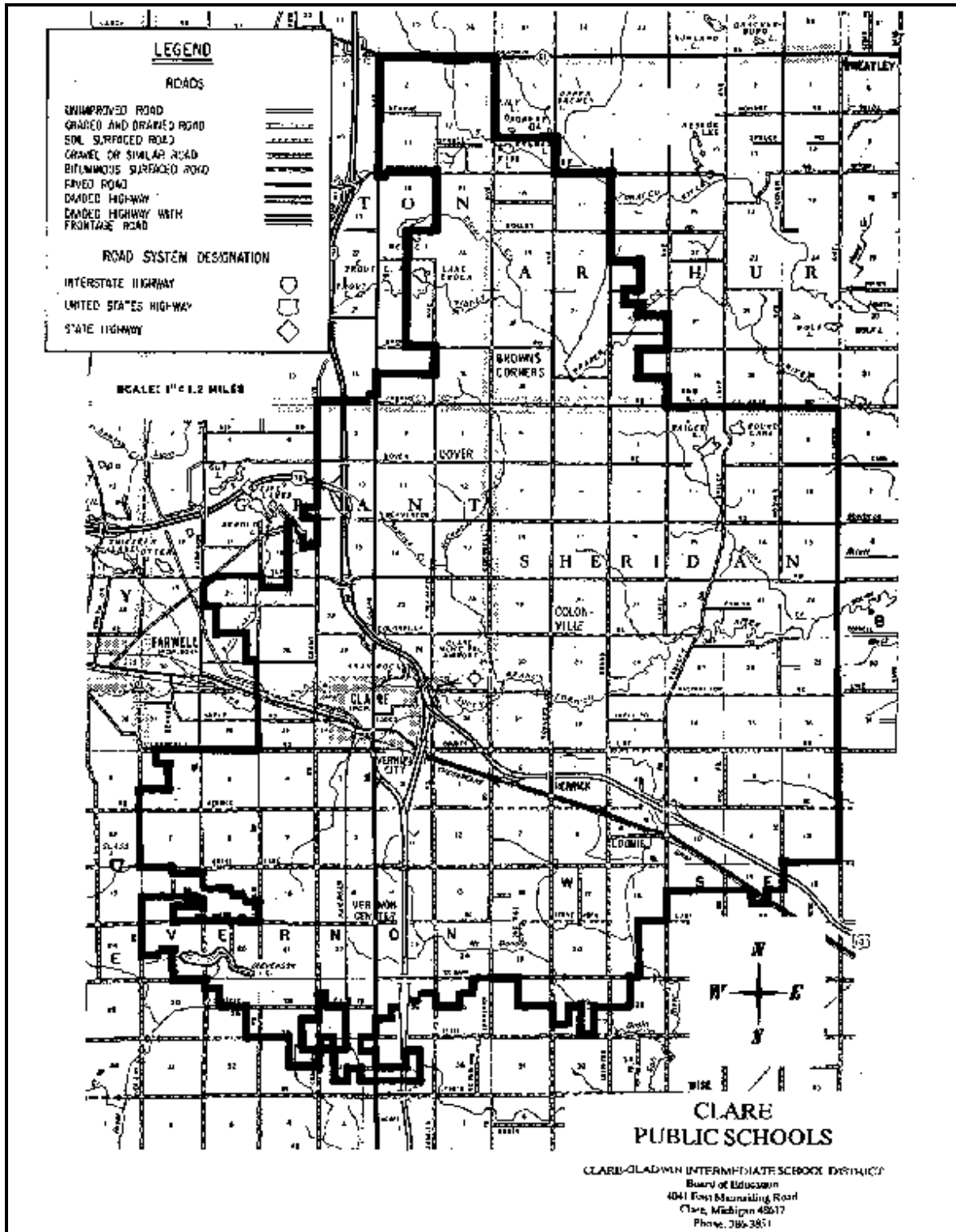


Demographics

Current Census data on the City of Clare is not available. Population estimates are only available to 2007, and only at the county level. According to the 2000 census, the City of Clare had a population of 3,140. Less than 3% of the population was represented by minority or ethnic groups. Females significantly outnumbered males 56% to 44%. The median age in the City of Clare at that time was 39.5 years, more than three years older than the state or national median age. This age difference is evidenced in the percentage of residents over the age of 65 years. While both the state and national average for persons over 65 were 12%, in the City of Clare over twenty (20.5%) percent of the population was 65 or older. There is little reason to believe that the demographic makeup of the city has changed significantly since 2000.

For planning purposes, it is useful to look beyond the City of Clare proper. Because of Clare's rural location, the City of Clare serves as a population center for an area much larger than the city itself. While the population of the City of Clare is only estimated to be about 3,100 in 2007, the Clare Public School district encompasses approximately 120 square miles, including parts of two counties and six townships. The 48617 zip code that represents the Clare Post Office serves an area with a combined population of 8,680. Many of these people choose to shop in Clare, and participate in recreation programs and services provided in the City of Clare. Although not tax payers, non-residents also add to the burden of providing parks and recreation services in the city and should be considered in planning decisions. See Figure 2 for the Clare Public Schools district map.

Figure 2: Clare Public Schools District Map



Population Trends

The population of the City of Clare has declined about 2%¹ between 2000 and 2007 (Table 1). This decline is a little larger than the rate of population decline of the county as a whole. Surry, Grant and Sheridan Townships, which surround Clare, also show declines in population ranging from 1% to approximately 3%. The current economic climate in the state of Michigan will likely continue to hold down population growth for the next several years.

The median age of a Clare resident is 37.2² years, almost 2 years older than the median age in the state of Michigan.

Economics⁴

Like the rest of the state, Clare County is suffering from the effects of the current economic conditions.

According to the Michigan Department of Energy, Labor & Economic Growth (DELEG), unemployment in Clare County is at its highest level in decades. In October, 2009, unemployment in Clare County stood at 16.6%; ranked 69th out of Michigan's 83 counties.

Median household income in Clare was \$28,734 (2007); almost \$20,000 less per year than the state median household income of \$47,950.

According to Sperling's Best Places³, the cost of living in Clare is reasonable compared to the nation. Clare scores a 78 compared to the national score of 100.

¹ http://www.michigan.gov/hal/0,1607,7-160-51170_51713_51716-195885--,00.html.

² <http://www.city-data.com/city/Clare-Michigan.html>

³ <http://www.bestplaces.net/city/Clare-Michigan.aspx#>

Table 1: Population of Clare County 2000 – 2007

Name	April 1, 2000	2000	2001	2002	2003	2004	2005	2006	2007	Change 4/00- 7/07
	Census	Estimate	Estimate	Estimate	Estimate	Estimate	Estimate	Estimate	Estimate	
Clare County	31,252	31,382	31,305	31,520	31,417	31,445	31,231	31,042	30,697	-1.8%
Arthur twp.	667	671	672	680	681	685	683	681	676	+1.3%
Clare city (pt.)	3,140	3,163	3,137	3,156	3,147	3,155	3,146	3,121	3,080	-2.3%
Franklin twp.	809	813	813	819	816	817	810	803	794	-1.9%
Freeman twp.	1,118	1,128	1,145	1,166	1,176	1,191	1,197	1,209	1,195	+6.9%
Frost twp.	1,159	1,164	1,162	1,169	1,164	1,164	1,153	1,144	1,129	-2.6%
Garfield twp.	1,968	1,976	1,969	1,979	1,969	1,967	1,947	1,930	1,905	-3.2%
Grant twp.	3,034	3,032	3,024	3,041	3,027	3,026	2,997	2,978	2,944	-2.5%
Greenwood twp.	1,059	1,064	1,065	1,073	1,070	1,071	1,062	1,054	1,042	-1.6%
Hamilton twp.	1,988	1,995	1,987	2,000	1,995	2,000	1,990	1,989	1,980	-0.4%
Harrison city	2,108	2,113	2,095	2,098	2,084	2,078	2,058	2,040	2,017	-4.3%
Hatton twp.	923	931	933	942	942	945	940	935	926	+0.0%
Hayes twp.	4,916	4,932	4,901	4,920	4,888	4,878	4,829	4,782	4,722	-3.9%
Lincoln twp.	1,758	1,767	1,783	1,815	1,818	1,823	1,825	1,828	1,813	+3.3%
Redding twp.	526	529	530	535	535	537	534	531	525	-0.2%
Sheridan twp.	1,588	1,596	1,597	1,611	1,608	1,612	1,602	1,593	1,576	-0.8%
Summerfield twp.	453	455	455	459	458	459	456	453	448	-1.1%
Farwell vill.	855	858	853	856	850	848	839	830	819	-4.2%
Bal. of Surrey twp.	2,700	2,709	2,697	2,709	2,696	2,694	2,670	2,650	2,619	-3.0%
Winterfield twp.	483	486	487	492	493	495	493	491	487	+0.8%

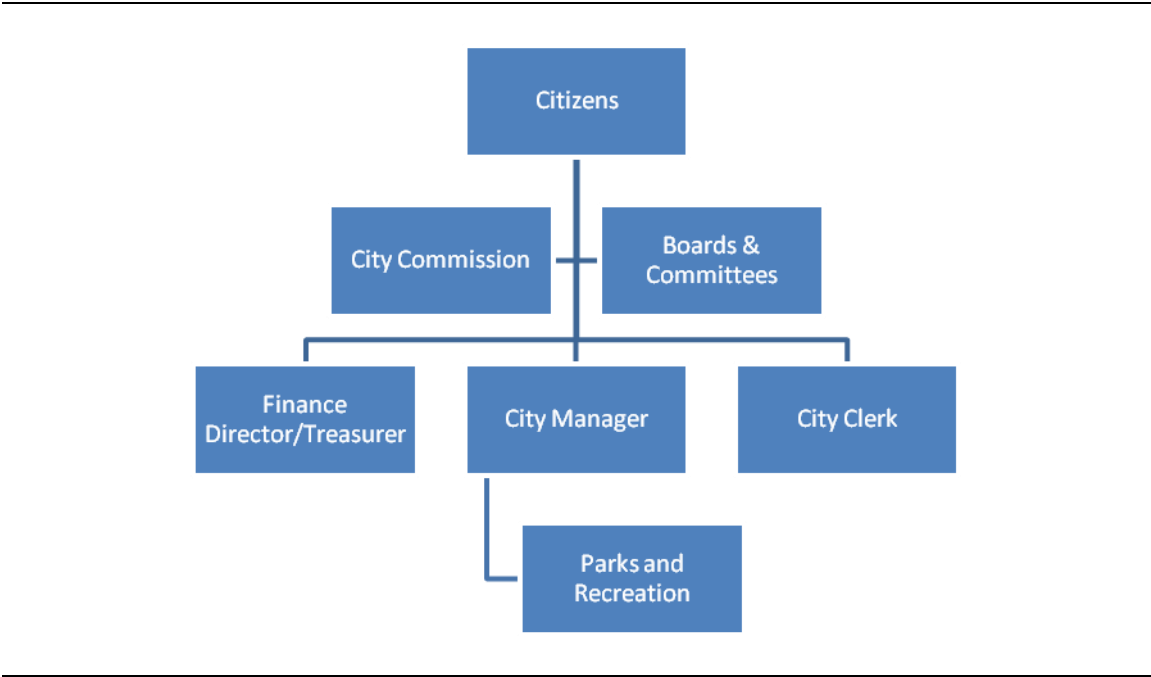
Chapter 3: Organization and Administration

The City of Clare provides parks and recreation services under authorization of MCL section 1917 Public Act 156, which states that “Any city, village, county or township may operate a system of public recreation and playgrounds; acquire, equip and maintain land, buildings or other recreational facilities; employ a superintendent of recreation and assistants; vote and expend funds for the operation of such system.”

Organization

The City Commission oversees operations of parks and recreation with recommendations from the Parks and Recreation Advisory Board, which is approved by the City Commission. Parks and Recreation currently exists as one of the departments of city government. Since the 2005 master plan was completed, the City of Clare has created a full time Director of Parks and Recreation position. The Director is supervised by the City Manager.

Figure 3: City of Clare Organizational Chart



Working Relationships

The Director of Parks and Recreation has responsibility for management of the City's parks and recreation areas, and for planning recreation programs and services for the public. In addition, the Director works closely with the Parks and Recreation Board, which provides recommendations to the City Commission on matters related to parks and recreation, and with the Director of Public Works in the area of park maintenance.

The Director also works closely with community groups that provide recreation programs in the community using city property. Since 2005, Parks and Recreation assumed responsibility for managing the community soccer program at the request of Clare Public Schools. The Clare Little League, Pony League, Rocket Football, and Adult Softball use city facilities, but are self-managed organizations run by parents and participants.

In addition, the Director works with other community organizations and partners to provide recreation programs and services. The department partners with the Chamber of Commerce, Police and Fire Departments, Clare Main Street, the Pere Marquette District Library, Clare Public Schools, community volunteers, and other groups to offer programs and services. The City of Clare has partnered with the Friends of Pere Marquette Rail-Trail Committee in support of efforts to expand the trail through the City of Clare.

The City of Clare has leased property at Brookwood Park from Clare Public Schools and has developed that property for recreational use. Old, unsafe playground equipment owned by the schools was removed and a new playground area was installed in its place by the City and community volunteers.

Like any community recreation agency, the City relies on a wide range of volunteers to provide recreation programs and services. The Clare Moose Lodge spearheaded the community-build playground project that resulted in the Imagination Gateway playground development. Students from Central Michigan University, particularly parks and recreation majors, are frequently recruited to provide leadership for events and programs offered by Parks and Recreation.

Funding

Funding for parks and recreation services comes from three primary sources: general fund appropriations, fees & charges for services, and a dedicated property tax for park improvements.

In November, 2008, the residents of Clare renewed the parks millage for five more years. This millage has been the primary source of funding for park improvements for the past ten years. The millage is estimated to produce an average of \$60,000 each year for the next four years. Table 2 represents funding levels for parks and recreation from various sources over the past five years.

The City of Clare has increased fee revenues annually since 2004, except during the most recent year. Facility rental and recreation fees have increased by almost \$15,000 over the past five years.

Table 2: Property Tax and Fee Revenue 2004 – 2009

Year	Park Property Tax Revenue	Fees
2008-2009	\$62,755	\$18,371
2007-2008	\$57,723	\$25,162
2006-2007	\$54,635	\$14,764
2005-2006	\$53,826	\$10,350
2004-2005	\$48,376	\$5,822

Parks and recreation operations are funded by the General Fund. Table 3 shows the actual and projected budgets for the 2008-2011 fiscal years for parks and recreation in Clare.

Table 3: Parks and Recreation Budget

CITY OF CLARE-PARKS AND RECREATION
PARKS AND RECREATION BUDGET
ACTUAL AND PROJECTED AMOUNTS FOR 2008-2011

PARKS AND RECREATION	2008-2009 ACTUAL	2009-2010 PROJECTED	2010-2011 PROJECTED
<u>Revenues</u>			
CURRENT PROPERTY TAXES	\$62,412.56	\$66,118.70	\$67,441.07
INTEREST AND PENALTIES TAXES	\$104.32	\$50.00	\$51.00
FEDERAL GRANTS	\$195,456.21	\$0.00	\$0.00
CHARGES FOR SERVICES - PARKS	\$6,085.87	\$5,000.00	\$5,100.00
CHARGES FOR SERVICES - RECREATION	\$12,285.00	\$12,000.00	\$12,240.00
SPONSORSHIPS	\$1,219.88	\$1,000.00	\$1,020.00
INTEREST	\$93.86	\$100.00	\$102.00
SPECIAL ASSESSMENTS	\$20,091.00	\$20,000.00	\$20,000.00
DONATIONS/CONTRIBUTIONS	\$4,007.00	\$3,000.00	\$3,060.00
REFUNDS AND REIMBURSEMENTS	\$217.00	\$0.00	\$0.00
Total - Dept	\$301,972.70	\$107,268.70	\$109,014.07
TRANSFERS IN - GENERAL FUND	\$150,000.00	\$250,000.00	\$210,000.00
Total Revenues	\$451,972.70	\$357,268.70	\$319,014.07
<u>Expenditures</u>			
WAGES	\$109,654.15	\$100,209.62	\$102,213.81
PAYROLL TAXES	\$14,907.08	\$7,666.04	\$7,819.36
FRINGE BENEFITS	\$5,963.60	\$17,516.94	\$17,867.28
RETIREMENT	\$11,369.62	\$12,373.19	\$12,620.65
SUPPLIES	\$17,396.20	\$25,390.00	\$25,897.80
PROFESSIONAL AND CONTRACTUAL SERVICES	\$58,605.00	\$43,665.00	\$44,538.30
SEWER	\$711.70	\$1,050.00	\$1,071.00
WATER	\$2,668.61	\$3,000.00	\$3,060.00
ELECTRICITY	\$4,372.75	\$5,200.00	\$5,304.00
REPAIRS - EQUIPMENT	\$1,104.18	\$1,500.00	\$1,530.00
LEASE/RENT	\$1,100.00	\$1,100.00	\$1,100.00
EQUIPMENT RENTAL - MOBILE EQUIPMENT	\$36,000.00	\$39,725.00	\$39,400.00
MISCELLANEOUS	\$80.80	\$200.00	\$204.00
PROFESSIONAL DEVELOPMENT	\$1,378.06	\$1,800.00	\$1,836.00
INSURANCE	\$480.00	\$494.00	\$509.00
CAPITAL OUTLAY - DEPRECIABLE	\$153,055.22	\$93,000.00	\$50,000.00
CAPITAL OUTLAY - NON-DEPRECIABLE	\$39,711.09	\$4,000.00	\$12,500.00
Total - Dept	\$458,558.06	\$356,890.19	\$327,471.44
Total Revenues	\$451,972.70	\$357,268.70	\$319,014.07
Total Expenditures	\$458,558.06	\$356,890.19	\$327,471.44
NET OF REVENUES AND EXPENDITURES	(\$6,585.36)	\$378.51	(\$8,457.37)

Chapter 4: Park and Recreation Inventory

The park inventory consisted of on-site visits to all city-owned parks and recreation areas. The inventory included recording the assets and features of each park. In addition, school facilities were inventoried where those facilities were used for recreation purposes. Finally, analysis was conducted of other recreation resources in the area by reviewing previous planning documents of the city, county, and other communities in the county, as well as state-owned recreation areas including camping and water access sites.

The City of Clare currently operates almost 35 acres of developed park space within the city.

Figure 4: Location Map of Clare City Parks



City of Clare Parks

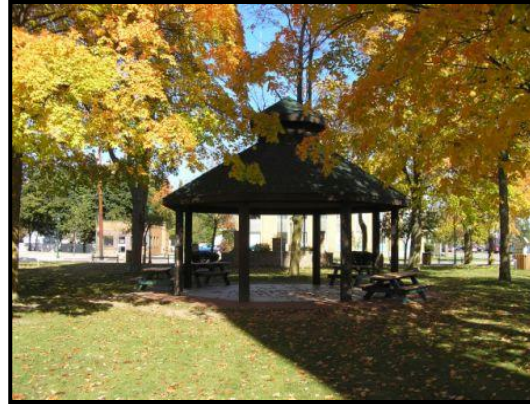
The City of Clare currently operates six developed parks throughout the city, and one temporary park at the airport.



Pettit Park (left and below), located on the Tobacco River in Clare, offers both day use and overnight use. Pettit Park includes 21 campsites (16 with electric hookup), playground equipment, picnicking, accessible fishing access to the Tobacco River, and restroom.



City Park (right), located on Fifth Street across from City Hall, includes a small gazebo and picnic tables. City Park is frequently used for arts and crafts and musical entertainment events.



Maple Street Park (left), located at the corner of Maple and 3rd, is the newest city park. Maple Street Park offers a covered picnic pavilion, picnic tables, grill, and playground structures.

Stamina Stadium & McIreland Nature Trails, (right) located at the end of Schoolcrest Avenue, includes 4 fenced baseball fields, 1 fenced T-ball field, concession stand with storage & restrooms, batting cages, a pavilion, swings, slide, and jungle gym.

McIreland Nature Trails, located in the wooded area south of Stamina Stadium (left side of picture), offers a ½ mile of natural wooded trail including two bridges.



2007 image does not show most recent changes including addition of a 4th little league field and paving of the parking lot.



Shamrock Park (left and below), located on Lake Shamrock in Clare, offers a variety of day use features to residents and non residents. In addition to one lighted little league baseball field, the park includes three pavilions, playground, lake access, picnicking areas, and a handicapped accessible restroom.



Brookwood Park (right and below), located on Woodlawn Avenue, includes one adult softball field and the Imagination Gateway Playground. The park is adjacent to school tennis courts and sports fields.

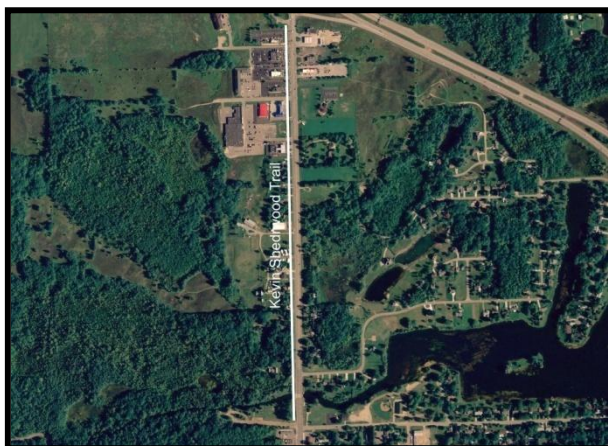


Airport Soccer Fields. (left) Temporary fields located at the airport have been in use since 2007 to meet the growing demand for youth soccer.

Trails

In addition to city parks, two developed trails serve the Clare community. The Pere Marquette Rail Trail currently has a trail head at the Pere Marquette District Library providing access to city residents. The City of Clare received a DNR grant for the purchase of the rail right-of-way and trail construction from the previous eastern terminus to the Pere Marquette District Library in downtown Clare. The Kevin Sherwood Trail runs for about a mile along McEwen Street from Pettit Park to the north end of town.

The Pere Marquette Rail-Trail, currently terminates at the Pere Marquette District Library. The City recently purchased the additional right of way needed to complete the 2009 trail extension from U.S. 127 overpass to the Pere Marquette District Library.



Kevin Sherwood Trail, located adjacent to McEwen Street provides an approximately 1 mile long multi-use trail.

Table 4: City of Clare Parks and Recreation Facilities Inventory

Facility	Park Type	Service Area	Location	Size	Inventory
Clare City Park	Community Park	Community	West 5th Street and Beech Street; Across from City Hall	0.8 Acres	Gazebo, 27' diameter; Picnic Tables; Grill; Benches; Water Fountain; Skateboard Equipment (Temporary and Seasonal).
Stamina Stadium	Sport Park	Community	820 Schoolcrest Avenue; Adjacent to McIreland Nature Trail	13.2 Acres	4 Fenced Baseball/Softball Diamonds with Bleachers; 1 Fenced T-Ball Field; Concession Stand; Storage; Accessible Restrooms; Batting Cages; Pavilion; Swings; Slide; Jungle Gym.
Pettit Park	Community Park	Community	Wilcox Parkway and McEwan Street; At Tobacco River	5 Acres	21 Campground Sites (16 with Electric Hook-up); Fire Rings; Potable Water; Playground Structure and Equipment; Horseshoe Pit; Picnic Area with Grills; Sanitation Station; Accessible Restroom Facility; Fishing Pier.
Shamrock Park	Community Park	Community	225 Wilcox Parkway; South Shore of Lake Shamrock	9.8 Acres	1 Lighted Little League Baseball Diamond with Bleachers; Concession Stand; Large Pavilion (Winter, Outdoor Ice Rink) 120' X 48'; Medium Pavilion 48' X 24'; Small Pavilion 30' X 18'; Accessible Restroom Facility; Playground Equipment area with Benches plus Playground Equipment throughout park; Horseshoe Pit; Picnic Tables; Grills; Storage Building; Fishing Access to Lake Shamrock; Barns Island (In Lake Shamrock, boat access only).
Airport Soccer Fields	Sports Park	Community	Washington Road and Eberhart Avenue; South Side of Airport	16.9 Acres	4 Sets of Regulation Goals, 3 Sets of Practice Goals, 7 Soccer Fields.
Maple Street Park	Neighborhood	Community	Maple Street and West 3rd Street	.4 Acre	Picnic Shelter and Table; Swing Set; Youth Climbing Wall; Sand Box; Grills; Benches.

Facility	Park Type	Service Area	Location	Size	Inventory
Brookwood Park	Community Park	Community	Woodlawn Avenue and Ann Arbor Trail	8.8 Acres	1 Lighted Adult Softball Field; Imagination Gateway Playground, Basketball Court, Picnic Tables, Sand Volleyball Court, Teatherball.
McIreland Nature Trails	Trails	Community	820 Schoolcrest Avenue; Adjacent to Stamina Stadium	.5 Mile	Non Motorized Use Only; Walking; Biking; Jogging; Bridges over Tobacco River; Several Benches; Wildlife Viewing Opportunities.
Undeveloped Property			Woodlawn North of Brookwood Park Softball Field	1.2 Acres	

Key to Park Types

- Neighborhood Park Park serving a neighborhood within ½ mile radius. Serving as recreation and social focus for the neighborhood. Generally include playground equipment, picnic areas, open play area, and shelters.
- Sport Park Includes facilities primarily for use by organized sport organizations for leagues and tournaments.
- Community Park Multi-use park serving both residents and non-resident visitors. Attractions for visitors and recreation opportunities for residents.
- Trail Multi-purpose trail for biking, walking, hiking. Natural surface.

Table 5: Clare Public School Facilities

<i>Facility</i>	<i>Location</i>	<i>Inventory</i>
Clare Primary School	Wheaton Avenue	Small Gymnasium/ Multipurpose room; Playground Equipment; Outdoor Basketball Hoops.
Clare High School	Wheaton Avenue and Cedar Street	Gymnasium with 1 Basketball Court; Bleachers; Concessions; Weight Room/ Fitness Center, 1 Baseball Field with Dugouts, Practice Area for Soccer and Football.
Clare Middle School	Wheaton Avenue and Hemlock Street	Gymnasium with 1 Basketball Court and Bleachers; Playground; Outdoor Basketball Area.
Brookwood Park Athletic and Recreation Complex	Woodlawn Avenue and Ann Arbor Trail	6 Tennis Courts; 1 Football Field with Home/Away Bleachers; 1/4 mile Track; 1 Baseball Field with Practice Cages, Dugouts, Bleachers; 1 Soccer Field with 2 Goals; Home/Away Locker Rooms; Public Restroom Facilities; Warming House; Concession Stand.
Undeveloped Property #1	Behind Glen's Market on North McEwan	Rolling Terrain (Half Wooded, Half Open); Significant Wetland Features; Wildlife Viewing Opportunities
Undeveloped Property #2	Near Brookwood Park	Wooded land, Possibly Wetlands in Some Areas

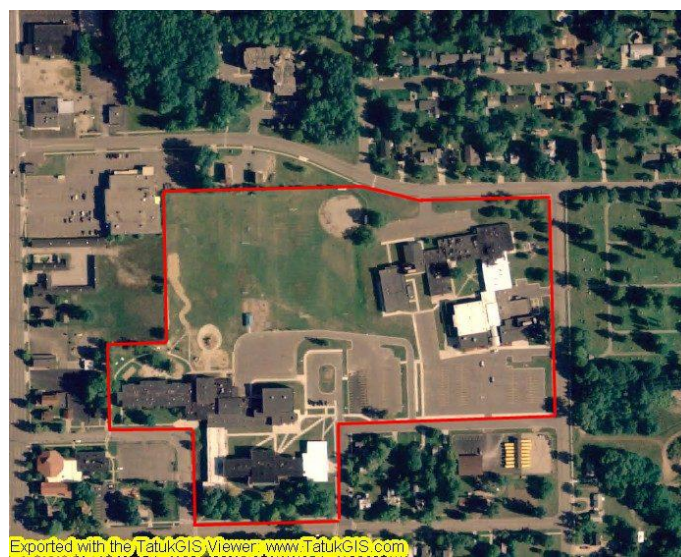
Clare Public School Facilities

Clare Public Schools and the Parks & Recreation Department have enjoyed a good working relationship over the years. Clare Public Schools operate a wide range of areas and facilities for interscholastic sports and physical education and provides outdoor playgrounds and play fields that serve the community as recreation facilities. Currently, the summer recreation programs and tennis have been a cooperative production of the Parks & Recreation Department and the schools. These are just a few examples of this cooperative spirit. The following is an inventory of public school area facilities that have recreational value.

Figure 5: Brookwood Athletic Complex



Figure 6: Clare Public Schools Facilities



Other Recreation Resources

In addition to city parks, residents can enjoy several other recreation resources in the community.

Table 6: Other Recreation Resources in Clare

Cherry Grove Cemetery	Popular area for walking, biking, jogging and dog-walking. Offers rows of paved lanes for safe, off-street activity. Undeveloped east end provides field space for the Rocket Football program. Connected by trails to the McIreland Nature Trail and Stamina Stadium.
St. Cecilia Cemetery	Popular area for walking, biking, jogging and dog-walking. Offers rows of paved lanes for safe, off-street activity.
Pere Marquette Rail Trail	30 mile non-motorized rail-trail running from Midland, MI to the Pere Marquette District Library in Clare.
Sherwood Trail	1 mile trail for non-motorized use only along North McEwen from Pettit Park to Colonville Road; walking; biking; jogging; rollerblading.
Lake Shamrock	Boat launch, fishing

Private Recreation Service Providers

- Curves for Women
- Gateway Lanes
- Clare Health & Fitness
- Firefly Golf course

Nearby Recreation Resources

City of Harrison (15 miles north of Clare)

The public facilities consist of public schools, campgrounds, fishing areas, public parks, and senior citizens areas. The public schools contain playgrounds, baseball fields, basketball courts, nature trails, and indoor gymnasiums. There are several campgrounds in the area which can offer swimming, boating and fishing. Along with campground fishing, there are also specific areas you can fish which have boat launches. Within any community there are a series of public parks which have ball fields, pavilions, playgrounds and trails. The last public part is the senior center park, which has a variety of activities such as horseshoes, and shuffleboard. All of these facilities are at the use of the public and can be enjoyed by everyone.

Along with public facilities, there are also several private activities that individuals can participate in. There are several golf courses within the area, as well as a mini golf area. There is also a downhill skiing and snow tubing facility called Snow-Snake. Other popular activities include go-carts, batting cages and bowling.

Village of Farwell (5 miles west of Clare)

Public areas consist of public parks, and public schools. The parks contain a variety of areas and facilities, such as open space, ball fields, tennis courts, playgrounds, and pavilions. The public schools have football fields, soccer fields, track lanes, tennis courts, ball fields, and playground equipment.

Isabella County (south of Clare County)

The Isabella County Park Commission operates a number of county parks. These facilities offer camping, cabins, playgrounds, boat launches, nature trails, and lakes. One Isabella County Park, Herrick Park, is located only 2 miles east of the City of Clare off of U.S. Highway 10.

City of Mount Pleasant (15 miles south of Clare)

The City of Mount Pleasant has several public parks, offering trails, playgrounds, sport fields, pavilions, outdoor basketball and volleyball courts, shuffleboard, tennis courts, a skate park, swimming, canoeing, fishing, and tubing access to the Chippewa River. In the winter, parks are available for cross country skiing and sledding. A variety of private recreation service providers including multiple golf courses, bowling lanes, an ice arena, roller-arena and billiards are also available in the city. The recently opened Morey Courts recreation facility offers basketball courts, volleyball, tennis, racquetball, exercise and fitness equipment, and other activities. Central Michigan University, located in Mount Pleasant, offers facilities to the public including swimming, softball, soccer, basketball,

volleyball, racquetball, frisbee golf, health and fitness, weight lifting, aerobic exercise programs and other recreation facilities and services.

Clare County and Townships

Townships in Clare County offer a variety of water access areas and outdoor recreation facilities. Freeman Township has public access at Windover Lake. Frost Township has two public access points on Long Lake. Garfield Township features several lakes with public access, and the park at Crooked Lake has ball fields, playgrounds, picnic areas, tennis courts and a swimming beach. Grant township has public access points at Gut, Five and Otter lakes. It also features fishing in the Tobacco River. Hatton Township has a roadside park. Hayes Township has a Civic Center, Community Center, Township Park and Township hall. The township Hall features a gym, exercise floor, dance floor, softball, basketball, picnic, play area and some trails. Redding Township features access to the Muskegon River. Summerfield Township has 30 miles of snowmobile trails and 20 miles of ORV trails and access to the Muskegon River. Other recreation facilities located in Clare County include several golf courses, Snow Snake Ski & Golf Resort, and Duggan Canoe Livery and Campground.

Status of all DNR Grant-Assisted Park and Recreation Projects

During 2005 – 2010 fiscal years, the City of Clare received funding from the Michigan Natural Resources Trust Fund (MNRTF) in the form of two grants. Both grants were in association with extending the Pere Marquette Rail-Trail from its previous terminus at the east boundary of the city in Isabella County into downtown Clare to the Pere Marquette District Library. Planning and execution for the extension of the Pere Marquette Rail Trail proved to be a lengthy and in-depth project, with initial planning starting almost 11 years ago. In order to make the project a success, the City had to secure ownership, easements, or leases for many parcels of property along the route for the trail. With the generous support from grants, millage revenue, and general fund dollars, construction of the trail extension occurred in 2009, with the extension being formally opened via ceremony on Saturday, September 19, 2009. Final elements of the new extension, including signage and final touches on landscaping, are expected to be put into place during spring, 2010.

While the extension of the Rail Trail into downtown Clare proved to be a long and detailed project, it is certainly one that has greatly benefited the community, bringing the ability to safely recreate on an off road, non-motorized, multiuse path to the convenience of downtown. The final phase for Clare’s portion of the Pere Marquette Rail Trail will be to work on closing the gap between the current terminus of the trail at the Pere Marquette District Library in downtown and the edge of the paved trail outside the Moose Lodge on the west end of Clare.

<u>Grant No</u>	<u>Project</u>	<u>Amount</u>
TF05-171	Pere Marquette Trail-Extension	\$ 99,100
TF07-096	Pere Marquette Rail Trail Extension	\$500,000

Recreation Programs and Services

City of Clare Parks and Recreation

Over the past several years, the City of Clare has been able to support a city employee to organize and lead a variety of recreation programs and services in the community. Initially the leadership was part-time, but in 2006 the City was able to create a full-time position of Director of Parks and Recreation. The following is a list of many of the recreation programs and services that have been provided in the community by the City of Clare Parks and Recreation Department alone, or in partnership with community groups and organizations.

Youth

Punt Pass Kick

Pitch Hit and Run

Hoop Skills

Hoop Zone

- Lil Dribblers (4-6 years)
- Rookie Co-ed basketball league (2nd-3rd grade)

Soccer

- Leagues
- Summer camps and clinics

Tennis Lessons

Free Climb (CMU student cooperation)

- High Adventure Day

Jr. Academy (elementary-middle school)

- Police
- Fire Fighter

Themed parties (ex: Harry Potter Party)

St. Patty's Day

- Essay Contest
- Carnival
- Fun Run

Pumpkins in the Park (carving)

Main Street Spooktacular

Spring Break Event

EGGstravganza

Wonders of Water (new grant program)

Read and Roll (roller rink passes for reading)

Teen

Misc. Teen events

- New Years Eve Game Fest

Teen Group

- Middle to High school
- Plan events and run them (volunteer)
- Haunted Basement

Glow in the Dark Easter Egg Hunt

Pumpkin Smash Bash

Teen Lock-in

Adult

Men's and Women's Softball Leagues

Snow Shoeing 101 (2hr learn to class)

Walking Programs

- Get Fit on Route 66
- Summer Shape Up
- Mom's on the Move

Parents Day Out (kids Valentine's Day)

Main Street Car and Bike Show

Old 27 Power Tour

- Programming for drivers
- Clare is a stop on their tour

Women's Spa Day (2007)

Women and Power Tools

Tai-Chi

Yoga

Seniors

Kaleidoscope program (2006)

- Senior health and well being

Jamborees (usually 3 per year)

- Acoustic Country

Family

Haunted Basement (teen program)

Summer Concert Series

- Clare Super Star Contest

Bowl-a-Thon

Summerfest Fireworks

Nature Programs

- 1 hour nature hike

Outdoor ice rink (flood pavilion)

Tour de Trail

- Bike, hike, roller blade, etc.
- Through Isabella county

Passport to Safety

- Bike inspection
- Neighborhood Watch

- First Aid
 - Give out helmets
- Show Us Your Snow
 Clare Pride Day/Clare Clean Up
 Big Screen Movie
 Mid-Winter Blast

- Summer Parks Program
 Christmas Open House
 Lunch with Santa
 Santa's Mail Box
 North Pole Calling

Recreation Programs and Services Provided by Other Organizations.

Clare County

Clare County Fair held annually in August
 Thousands of acres of State land

- Snowmobile and ATV trails
- Over 20 public access lakes
 - Swimming
 - Fishing/ice fishing
 - Boat rentals
 - Canoeing/kayaking/tubing
- Hiking/biking
- Hunting
- Mushrooming
- Bird watching

Golf courses

- Snow Snake
- Eagle Glen
- Firefly Golf Links
- The Tamaracks

Amish Community

- Yoder's Flea Market & Quilt Auction

Clare Chamber of Commerce

Clare Summerfest
 Clare Rotary Super Bowl Party

Annual Crafts in the Park
 Cupid's Scotch Doubles
 City wide yard sales
 Harrison 4th of July Celebration Parade
 Yoder's Amish Quilt Auction and Craft Show
 Father/son golf outing
 Business After Hours
 Christmas Open House
 Rotary Spring Fling Frolic
 Little League opening day parade
 Council on Aging Junefest
 Chamber Golf Outing
 New Years Eve Celebration

Clare Irish Festival

Karaoke Star Search Contest
 Irish Recipe Contest
 "Lafferty's Wake"
 Children's Carnival
 Irish Craft Show
 Leprechaun Contest
 Bed Race
 Irish Parade
 5/10K Road Race and Walk

Standards Analysis

Standards applied in this section are based on standards proposed by the National Recreation and Park Association 1995 report *“Park, Recreation, Open Space and Greenway Guidelines,”* and Michigan Department of Natural Resources publication *“Guidelines for the Development of Community Park, Recreation, Open Space, and Greenway Plans.”* It should be noted that there are no “national standards” for park development. Instead, the latest NRPA study recommends that each community is unique, and that standards which reflect the local “uniqueness” should be established.

This review looks at three types of park standards. First it looks at total acreage of parkland within a system. This analysis is broken into park types. From this analysis we can begin to see how existing facilities compare with other communities, both with overall park acreage and with park types within this overall acreage.

The second analysis looks at recreation activity area standards and the facilities required to provide these activities. By establishing a population-based standard for various recreation activities, this study establishes the type and quantity of facilities the City should develop in the future.

The third analysis looks at the service area standard recommendation for different park types to determine whether all citizens of Clare have access to appropriate park areas in their geographic areas.

Park Land Standards

The Park Land Standard is a recommended guideline for developed park space in a community. Regardless of the purpose for which it is developed, the Park Land Standard measures only the gross acreage of space that has been developed for recreational use. The City of Clare exceeds the standard for developed park land (Table 7).

Table 7: Park Land Area Standards

Total Acres of Developed land	35.8 acres
2000 Census Pop. of Clare	3,140
Acre/Person	11.8 acres per 1000 people
Recommended Standard*	6.25 to 10.50 acres of developed open space per 1,000 population

*National Recreation and Park Association

Recreation Activity Area Standards

The Recreation Activity Area Standards provide an assessment of the number and types of specific recreation use areas in a community, based on national data for a “typical” community. Some of the most common types of recreational uses are included in these standards, however, they are by no means comprehensive. Clare meets or exceeds the standard for the most common types of recreation activity areas (Table 8).

Table 8: Activity Area Standards

Feature	Standard	Clare Inventory	Evaluation
Basketball courts	1 per 5,000	3	Exceeded
Tennis courts	1 per 2,000	6	Exceeded
Baseball – Official	1 per 5,000	1	Met
Baseball – Little League	1 per 30,000 (lighted fields)	1 lighted, 4 not lighted	Exceeded
Football - HS	1 per 20,000	1	Met
Soccer	1 per 10,000	1	Met
Golf Driving Range	1 per 50,000 or 30 min travel	2	Exceeded
Running Track	1 per 20,000	1	Met
Softball fields	1 per 5,000	3	Exceeded
Trails	1 system per region	1	Met
Golf Courses	1 per 25,000 or 30 min travel.	2	Exceeded

*National Recreation and Park Association

Activity Area Standards do not reflect many of the recent changes in recreation activity preferences. Some popular recent developments, including such things as dog parks, spray parks, disk golf courses, and skate parks, are not addressed in these standards. Also, growth in girls and women's sports, such as softball, are not reflected in these 1960's standards for softball fields. In addition, preferences for specific recreation activity areas can vary considerably between communities in different geographic areas of the country. For instance, winter sport activities are almost nonexistent in the standards, while the demand for winter recreation activity areas is higher in northern climates such as Clare.

Chapter 5: Park Accessibility

Methods

For this portion of the assessment, the investigator worked with Dr. Mary Lou Schilling, Assistant Professor of Recreation, Parks & Leisure Services Administration at CMU whose expertise is recreation for persons with disabilities. Dr. Schilling has developed an assessment tool to evaluate outdoor recreation areas and facilities for compliance with the American's with Disabilities Act (ADA) and the Forest Service Outdoor Recreation Access Guidelines (FSORAG). This assessment instrument includes evaluation measures for pavilions, picnic tables, routes of travel (paths), cooking surfaces and grills, benches, restrooms, parking areas, playgrounds, fishing piers and platforms, boating facilities, boat launches, campgrounds and RV parks, tent pads and platforms, fire rings, and outdoor athletic facilities.

Each park was visited and evaluated using the Barrier Free Access Survey instrument. Parks were assigned a score based on the percent of applicable standards that were met for each park. In addition, key findings for each park are identified below (Table 9).



Table 9: Park Accessibility Assessment

Park	Score	Comments & Recommendations
Shamrock Park	73%	All elements of the park are not connected by an accessible route. Grills and picnic tables do not meet guidelines for access or number. Playground area does not have an accessible route to the equipment itself.
City Park	71%	Grill (1) is not barrier free. 20% of picnic tables are not barrier free
Brookwood Park	65%	There is not an accessible route of the Imagination Gateway playground. There is not an accessible route of travel or barrier free parking at the ball field.
Pettit Park	55%	All elements of the park are not connected by an accessible route. Picnic tables and grills do not meet guidelines for access or number. Playground equipment is not accessible. There is no designated barrier free parking. There should be a 2" edge protection along the sides and front edge of the fishing platform. No campsites meet guidelines for ground surface, fire rings, signage.
Stamina Stadium	50%	All elements of the park are not connected by an accessible route. There is no designated or signed barrier free parking. Playground equipment is not accessible.
Maple Street Park	<50%	All elements of the park are not connected by an accessible route. The existing route is less than 36" wide in places. Playground equipment is not accessible. The picnic pavilion does not provide adequate space to maneuver a wheelchair. The grill is not accessible. Picnic table is not wheelchair accessible. There is no designated barrier free parking.

Recommendations

The highest priority should be placed on developing appropriate accessible routes of travel in parks that will permit barrier free access to all major elements of the park. This should be incorporated into long-range park planning efforts with future development of parks tied to the developed accessible route.

Decisions about future purchase of park amenities should be made with a plan toward selecting elements that are functional for all users regardless of ability. Picnic tables, benches and grills should be selected and installed to accommodate the widest range of abilities. Tables, grills and benches should be located along accessible routes to allow for ease of access and use.

Existing playground equipment should be improved by creating a barrier free accessible path both to the equipment areas and up to the accessible elements of the equipment.

As the city continues the paving of parking areas in parks, attention should be paid to assuring that barrier free parking is appropriately located and marked in all parks.

Chapter 6: Public Participation

Public Meeting

A public meeting was held February 23, 2009 at 6:00 p.m., at the Clare High School. In order to attract the broadest possible audience, the public meeting was promoted several ways. For the general public, an article discussing the master planning process and encouraging citizen attendance was submitted to the Clare County Review and the Clare Sentinel and published the week prior to the meeting (Appendix B). A promotional commercial was also created and aired on public access cable television. In addition to inviting the general public, a mailing list was created of persons and organizations that were felt to have an interest in recreation planning in Clare. This list included numerous community organizations such as the library, schools, clubs, organized youth sport groups, civic groups, local churches, etc. These individuals and organizations received personal invitations to participate in the public meeting. A copy of the letter of invitation and a copy of the mailing list are located in Appendix C. Approximately 25 people attended the public meeting.

Methods

The goals of the meeting were twofold; to “obtain citizen input on additions and improvements needed in Clare’s parks and recreation areas” and “to obtain citizen input on the kinds of recreation programs, services and opportunities that should be provided to citizens of Clare.”

Prior to the beginning of the meeting, large sheets of paper were placed on tables in the cafeteria. Each sheet of paper was labeled with the name of a particular group of people including: Children, Teens, Families, Adults, and Senior Adults. As people came into the meeting, participants were encouraged to circulate to the tables and write down ideas they had for recreation programs, services, and opportunities that should be provided to each of these citizen groups in Clare. Participants were instructed to continue writing ideas at any time during the meeting, during the break, or at the end of the meeting. Following the meeting, these sheets of ideas were collected and summarized.

In order to obtain citizen input on additions and improvements needed in Clare’s parks and recreation areas, a Nominal Group Process was employed. This portion of the meeting began by sharing a focus statement with the group (Figure 7).

Figure 7: Public Meeting Focus Statement

Focus Statement

In order to meet the future park and recreation needs of our community what kinds of improvements and additions should be made to Clare's parks and recreation areas?

During the first step of the Nominal Group Process, participants were asked to take 5-7 minutes to list the specific park and recreation improvements/additions they thought were needed in Clare. In the second step of the process, each participant was given an opportunity to share one idea from his or her list. Ideas were written on flip charts as they were offered by participants. After all participants had offered one idea, a second round of listing followed. Sufficient rounds were used to create an exhaustive list of all ideas from all participants. The third step of the process permitted participants to ask questions of other participants in order to understand and clarify ideas that had been suggested. This process resulted in almost forty specific project ideas (Figure 8).

Figure 8: Initial Project Listing (in no particular order)

Soccer Fields	Accessible Water/Fishing Area
Farmers Market	Trail Signs
Horseshoe Pits at City Park	Scattered Fields
Walking Routes in the City	Snowmobile Trails
Develop the Cemetery	Softball Fields
Clean Lake Shamrock	Sledding Hill
Restrooms at City Park	Ice Skating
Park Security	Bike Lanes
Football Facility	Bike Racks
Neighborhood Parks	Uniformed Signage
Community Swimming Pool	Water Tubing Area
Expand Campground	Splash Park
Showers at Pettit Park	High School Sized Baseball Field
Enhance Picnic Areas	Rail Trails
Shuffleboard at City Park	Nature Trail
Community Center	Community Garden
Band Shell	Purchase Land
Tennis Courts	Outdoor Basketball Court
Pavilion	Park by Dam

The fourth step of the Nominal Group Process followed the listing and clarification process. At this step, participants were asked to vote on the top 15 ideas from the combined listing. This process was used as a way to narrow down the overall list to a more manageable priority list based on the input of the participants. Participants were then given a break for refreshments, during which time the results of the voting were tabulated and a revised list of the top ideas was created (Figure 9).

Figure 9: Revised Project List

Soccer Fields	Community Center
Farmers Market	Band Shell
Horseshoe Pits at City Park	Accessible Water/Fishing Area
Walking Routes in the City	Trail Signs
Develop the Cemetery	Softball Fields
Clean Lake Shamrock	Sledding Hill
Restrooms at City Park	Bike Lane
Community Swimming Pool	Bike Racks
Expand Campground	Rail Trails
Showers at Pettit Park	Nature Trail
Enhance Picnic Areas	Outdoor Basketball Court
Shuffleboard at City Park	Park by Dam

When the meeting was called back to order, the results of the voting were shared with the participants. The final step of the process called for participants to again vote on their favorite ideas. To cast their votes, each participant was given five colored stickers. It was explained that each sticker counted for one vote. Participants were asked to cast their votes by placing stickers next to what they considered the top five ideas. Once all participants had voted with the stickers, each participant could clearly see which ideas were favored (Figure 10). Only projects that received five or more votes are included in the final list.

Figure 10: Project List Final Voting

Rail Trail (12)
 Farmers Market (12)
 Soccer Fields (9)
 Clean Lake Shamrock (7)
 Expand Campground (7)
 Showers at Pettit Park (7)
 Softball Fields (7)
 Accessible Water at Fishing Area (6)

Before the meeting was adjourned, all participants were reminded that this was not a policy setting meeting, but only an open forum to hear the wishes of Clare residents. Participants were also reminded that they were mailed a parks and recreation survey, and were encouraged to complete it and return it as soon as possible. They were then assured that their input with the meeting and survey would be included in the Master Planning process and would be used to develop a capital improvements schedule for the next 5 years. The participants were then thanked for braving the winter storm to share their valuable input into the Clare Parks and Recreation master planning process and wished a safe journey home.

Results

There was an overall consensus that continued development of the rail trail and the reconstitution of a city farmers market were highly desirable. Creation of soccer fields, improvements at Pettit Park (expand camping, showers) and creation of adult softball fields were also highly valued. Cleaning Lake Shamrock was also a desired project.

Recommendations

Based on participant input and voting, the following list of recommendations is suggested to the City of Clare for future development.

- Trail development, linear parks, connectors
- Initiate a farmers market
- Improvements to Pettit Park
- Recreation Development at the airport which could include soccer and/or adult softball
- Improve fishing access at parks

Other Program Ideas

Participants were also asked to list ideas for programs and services that they would like to see offered. Sheets of paper were provided and labeled by user groups. The following is a summary of programs and services that were suggested.

School Age Children

- Grandparent's day out
- Volunteer days
- Tour of City facilities
- Art Classes
- Community/children gardens
- Fishing events

Youth & Teen

- A group of peer advisors (Teen Group)
- More volunteer opportunities.
- Summer Sport and Art programs.

Families

- Horseshoe Tournaments
- Outdoor Sports Tournaments
- Live Music
- Board Game Tournaments (chess, checkers, etc)
- Fishing Tournaments
- Biking and walking events

Senior Adults

- Card Tournaments
- Horseshoe Leagues
- Shuffle Board Leagues
- Music at Noon
- Dancing
- Travel Club
- Art Classes
- Walking groups

Other

- Fishing Contests
- Boating Events
- Special Olympics
- Computer Classes at the Library
- Air Plane rides
- Art Classes
- Music Classes

Public Survey

A survey of Clare residents was also part of the public input process. The survey included questions about preferred park improvements, recreation interests, and attitudes and opinions about Clare parks and recreation services. A copy of the survey can be found in Appendix E.

Methods

A survey was developed with input from the current and former parks and recreation directors from the City of Clare. Surveys were distributed several ways. Surveys were mailed to households along with the March, 2009 water bills. Surveys were hand delivered to apartment complexes that do not receive individual water bills. In addition to the printed surveys, an on-line survey was created and linked to the City of Clare web site.

An article about the planning process and survey appeared in the Clare County Review the week before the survey was mailed. Additional information about the planning process, and the alternatives was also included in the mailed survey and advertised via the local cable access channel.

Approximately 1,100 surveys were mailed to households with the March water bill. One hundred twenty-four written surveys were returned. An additional six surveys were completed using the on-line survey option.

Results

Characteristics of subjects and households

Eighty five (84.7%) percent of respondents indicated that they were residents of the City of Clare.

Park Use

Respondents were asked to classify themselves as either regular, occasional, infrequent, or non-users of Clare parks. Almost half (45.7%) of residents classified themselves as occasional park users. Those indicating that they were regular park users made up almost one quarter (22.5%) of the respondents. Only about five percent (4.7%) indicated that they were not park users (Table 10).

Table 10: Park Use by Household Type

Which of the following best describes your family's use of city parks?	All households	Households with children & youth	Households with adults over 55
Regular users	23%	40%	8%
Occasional users	46%	44%	42%
Infrequent users	27%	12%	42%
Not users	5%	2%	8%

Respondents were also asked to indicate which of the city parks members of their family had used in the previous year. Shamrock, the Pere Marquette Rail Trail and City Park were the most frequently identified parks used during the previous year. Among households with children and youth, the most used parks included Shamrock Park, Brookwood park and the Pere Marquette Rail Trail. Among households with adult over 55, the most used parks included Shamrock Park, City Park, and the Pere Marquette Rail Trail. Table 11 shows the breakdown of park use.

Table 11: Parks Used During Past Year by Household

Park	Percent of All Households	Percent of Households with children & youth	Percent of Households with Adults over 55
Airport Soccer Fields	7.2%	26.9%	6.2%
Brookwood Park	20.8%	75.0%	37.5%
City Park	26.6%	36.5%	53.1%
Maple Street Park	2.5%	5.8%	4.7%
McIreland Nature Trail	13.1%	25.0%	20.3%
Pere Marquette Rail Trail	28.3%	59.4%	40.6%
Pettit Park	18.1%	44.2%	21.9%
Shamrock Park	38.0%	76.9%	68.8%
Stamina Stadium	11.8%	38.5%	12.5%

In addition to asking which parks the respondents used during the previous year, respondents were asked to indicate the park they used most often. Brookwood Park, Shamrock Park, and the Pere Marquette Rail Trail were identified as the most frequently used parks by respondents.

Priorities for New Recreation Facilities

Participants were asked to indicate the priority the city should place on developing new kinds of recreation areas and facilities. Options ranged from “highest” to “lowest” with 5 being the highest priority and 1 being the lowest priority. The following table shows the overall priority based on all responses as well as priorities of households with senior adults present and households with school aged children present (Table 12).

Table 12: Priorities for New Recreation Facilities

	Overall	Households with adults	Households with school aged children
Indoor recreation/community center	3.80 (1)	3.38 (2)	4.12 (1)
Trails (Bicycle paths, exercise, nature, hiking, walking)	3.76 (2)	3.61 (1)	3.81 (2)
Sledding hill	3.46 (3)	3.29 (3)	3.79 (3)
Swimming Pool	3.20 (4)	3.02 (5)	3.37 (4)
Picnic areas & Pavilions	3.19 (5)	3.11 (4)	3.17 (6)
Playgrounds	3.07 (6)	2.92 (6)	3.07 (7)
Sport courts (basketball, volleyball, etc)	3.03 (7)	2.57 (8)	3.32 (5)
Permanent skateboard park	2.82 (8)	2.55 (9)	2.95 (8tie)
Public Campground	2.78 (9)	2.65 (7)	2.95 (8tie)
Sport fields (baseball, softball, soccer, football, etc.)	2.69 (10)	2.45 (10)	2.95 (8tie)

Resident Opinions about City Parks

Participants were asked to rate how strongly they agreed or disagreed with a number of opinion statements about Clare parks and recreation. Statements were evaluated on a scale ranging from strongly agree to strongly disagree, with 5 being strongly agree and 1 being strongly disagree. The table below shows the average response to each statement (Table 13).

Table 13: Resident Opinions about Clare Parks

	Average response
Clare city parks make a positive contribution to the quality of life in Clare	4.41
I feel it is safe to walk or bike from my home to the nearest city park.	4.33
The City of Clare has an adequate number of parks to meet the current needs of the population for park space.	4.25
There should be an increased emphasis on providing recreation for youth in the community.	4.20
Clare city parks are a point of pride in the community	4.13
There should be increased emphasis on providing recreation programs and services to senior adults in the community.	3.85
There should be an increased emphasis on providing activities that the whole family can participate in.	3.79
There should be an increased emphasis on instructing people how to enjoy different leisure and recreation activities	3.54
There should be increased emphasis on additional development of existing Clare parks.	3.49

Residents Underserved by Recreation Services

Respondents were asked whether they felt that there are any groups of citizens in the Clare community who do not have adequate access to recreation programs and activities. Almost one third (32.1%) of those answering the question answered yes. As a follow-up to this question, respondents were asked to identify the groups they felt lacked adequate access to recreation programs and services. By far, senior adults were most frequently identified as a group in need of better access to recreation programs and services. Senior adults were mentioned nineteen times out of thirty-eight comments (50%) Following senior adults, groups to receive mention were teens (16%), children and youth (14%), persons with disabilities (8%), and low income (5%).

Desired Programs and Services

Respondents were provided with a menu of recreation programs and service ideas, and were asked to indicate those in which members of their household might have an interest (Table 14). The following is a summary of the results.

Ages 5-12: Thirty-seven respondents indicated the presence of children below the age of 12 in their household. Among those, greatest interest was expressed in summer day camps, (68%), family activity programming (65%), arts & crafts (62%), winter activities (62%), and sport leagues and tournaments (60%).

Ages 13-19: Twenty-four respondents indicated the presence of youth from 13-19 years of age in the household. Greatest interest was expressed in swimming, camping, canoeing, and winter activities (50% each).

Ages 20-55: Eighty respondents indicated the presence of adults from 20-55 in the household. Greatest interest was expressed in aerobics/fitness and community special events (55% each), canoeing (54%), and hiking/backpacking (49%).

Ages 56 and up: Sixty-four respondents indicated the presence of adults above the age of 55 in the household. The greatest interest was expressed for aerobics/fitness (53%), community-wide special events (45%), trips to see entertainment/sports (42%), healthy eating/dieting and music (35% each).

Table 14: Recreation Programs and Services Preferences

	Children under 12 (N=37)	Youth 13-19 (N=24)	Adults 20-55 (N=80)	Adults above 55 (N=64)
Dance, theatre, drama	51%	46%	30%	22%
Arts, crafts	62%	42%	30%	33%
Music	57%	42%	39%	35%
Sport skill instruction	57%	29%	11%	3%
Sport leagues and tournaments	60%	42%	38%	NA
Ice skating	51%	42%	28%	6%
Swimming	57%	50%	39%	23%
Camping	51%	50%	42%	6%
Canoeing	54%	50%	54%	14%
Hiking/backpacking	48%	42%	49%	27%
Winter activities	62%	50%	42%	13%
Aerobic/fitness activities	32%	8%	55%	53%
Computer instructions	30%	13%	41%	31%
Healthy eating/dieting	27%	8%	42%	35%
Summer day camps	68%	29%	11%	2%
Community special events	54%	42%	55%	45%
Family activities	65%	46%	54%	16%
Dances/socials	19%	29%	32%	17%
Trips to see entertainment/sports	35%	46%	42%	42%

Sources of information about parks and recreation

When asked how residents obtained community information about events in Clare, most people indicated the city newsletter (43%), the newspapers (40%), or word of mouth (30%) as their source of information (Table 15).

Table 15: Sources of Information

Source of Information	
City Newsletter	43%
Newspapers	40%
Word of mouth	30%
Cable TV	14%
Posters & Flyers	14%
School handouts	11%
Web/Internet	7%
E-mail from City Hall	6%

Recommendations

Based on the results of the survey, the City of Clare should focus on the following priorities:

- Development of an indoor community /recreation center, trails (of all types), and a sledding hill.
- Additional attention should be focused on programs and services for senior adults, children and youth.

Chapter 7: Goals and Objectives

Review of 2005 Goals, Objectives, and Strategies

The 2005 Parks and Recreation Master Plan document identified numerous specific strategies to carry out the goals and objectives of the plan. Goals, objectives, and strategies were organized into three categories: Park & Facility goals, Recreation goals, and Trails goals. Tables 16 thru 18 report on the status of the strategies identified in 2005.

Table 16: Status of 2005 – 2010 Park Goals

Goal	Status
Develop a neighborhood park at the intersection of Maple & 3 rd Street to include appropriate play equipment, seating, and activity areas.	Playground equipment, picnic shelter, table & grill placed in the park. New signage has been placed.
Develop a site plan for a neighborhood park on the north side of the Tobacco River dam for future development.	Site has been cleared.
To begin a multi-year paving program for all city parks insuring accessibility to each park.	Paved parking has been developed at Shamrock park. Parking at Stamina Stadium is being paved in phases over three years. A paved parking area has been created at Brookwood park adjacent to the Imagination Gateway playground.
To create appropriate assessable routes of travel within parks.	All parks have been reviewed for appropriate improvements needed.
To install appropriate signage.	Park signage installed as needed.
Install new playground equipment at Pettit Park.	No progress
Construct a new group picnic pavilion at Pettit Park.	No progress
Install new playground equipment at Brookwood Park.	The Imagination Gateway playground was constructed.
Initiate a planned replacement program for skateboard equipment.	Skate park committee formed, but interest later continually decreased
Purchase new bleacher seating for Stamina Stadium.	Done
Acquire an outdoor hockey system including boards & liner that can be used in the large Pavilion at Shamrock Park.	Done
Construct a warming house for the hockey rink at Shamrock Park.	No progress

Identify a location to develop a winter sledding hill.	Several sites are being reviewed
Construct a winter sledding hill and warming house.	Several sites are being reviewed
Identify a permanent location for the skateboard equipment.	Several sites are under consideration
Investigate the feasibility of developing an aquatic feature within the park system.	No progress
Develop a program statement for a community center to meet the needs of the community for a youth center, senior adult center, community meeting rooms, and indoor recreation area.	No progress
Set aside a portion of the recreation tax funds each year over the next five years to go toward creation of a design for the proposed community center facility.	No progress
Identify a location for development of soccer/football fields, complete site design.	Soccer fields have been relocated to the airport.
Upgrade campsites in Pettit Park.	No Progress
Construct a shower facility at Pettit Park.	Engineering designs completed and project is being put out to bid.
Develop a site plan for a day use area and campground at the airport facility.	No progress

Table 17: Status of 2005 – 2010 Recreation Goals

Hire a ½ time Parks and Recreation Director.	A full-time recreation director position was created in 2007.
Create programs and services that will promote healthy lifestyles such as walking, running, biking, exercise, etc.	Programming efforts are ongoing.
Create programs and services to serve underserved citizens.	A group of senior adults and a group of teens have been created to provide input to the recreation director on desired programs and services
Create a presence for the Department of Parks and Recreation by participating in community events in cooperation with partner organizations.	Partnerships and co-sponsorships with other community agencies are ongoing.

Table 18: Status of 2005 – 2010 Trail Goals

Purchase the old Depot for future rehabilitation	The city has acquired the old depot building.
Install a new roof on the old Depot to insure it against further deterioration.	No progress
Request an easement on land between Pettit Park and Vinewood Street for future trail development.	No progress
Work with Clare Public Schools to secure an agreement to purchase or access school property located behind Glens Market for development of trails and outdoor recreation use.	No progress

2010-2015 Goals and Objectives

1. Global Planning Goals:
 - a. All park projects should be undertaken with a goal of improving ADA access guidelines for persons with disabilities.
 - b. All purchases of park equipment (playground equipment, picnic tables, benches, grills, etc) should be undertaken with a goal of meeting ADA access guidelines for persons with disabilities.
 - c. Continue to support efforts of community organizations to expand the Pere Marquette Rail Trail into and through Clare.
 - d. Develop a comprehensive park plan including existing city parks and other city-owned property with recreation potential.
 - e. Work in partnership with existing community organizations to meet leisure needs. i.e. schools, Council on Aging, local businesses, Chamber of Commerce).
 - f. Continue to support efforts by community groups to restore the Old Depot structure.

2. Park Improvement Goals:
 - a. Identify and develop permanent site for a skateboard park.
 - b. Complete paving of parking at Stamina, Brookwood, Pettit, and Maple Street parks.
 - c. Construct shower facility at Pettit Park.
 - d. Improve camp sites at Pettit Park including upgrading pads, fire circles, and adding water hookups.
 - e. Construct a picnic pavilion at Pettit Park.
 - f. Improve or replace playground equipment at Pettit Park.
 - g. Improve signage for all parks.
 - h. Construct a new adult softball field.
 - i. Identify a location and develop a sledding hill.
 - j. Find a permanent location for soccer fields.
 - k. Develop shuffleboard courts.
 - l. Develop horseshoe pits.
 - m. Develop basketball courts.
 - n. Purchase grills as needed for all parks.
 - o. Purchase picnic tables as needed for all parks.
 - p. Identify locations for “pocket parks” in underserved neighborhoods.
 - q. Relocate/improve small pavilions at Shamrock Park.

3. Recreation Goals:
 - a. Assure continuation of the Recreation Millage for Parks.
 - b. Continue to work with citizen advisory groups to meet leisure needs:
 - i. Youth.
 - ii. Senior Adults.
 - c. Re-establish a farmer's market program in the city.
 - d. Develop a Red Cross instructional program including swimming lessons.

Chapter 8: Action Plan

The Action Plan represents a proposed plan of action for the next five years. The Action Plan may be revised from year to year and an updated Action Plan will be filed with the Department of Natural Resources as required.

Factors that may influence the revision of the Action Plan include continuing levels of general fund support, continued support for the Park Millage, and continued revenues from program and rental fees. In addition, opportunities to partner with other organizations, external funding opportunities, and well as significant changes in the recreational needs of the community may all influence changes to the Action Plan. Updates to the Action Plan are always submitted for public review and input prior to approval by the City.

Table 19: 2010 – 2015 Action Plan

Year	Action	Cost	Funding Source
2010-2011			
	Pettit Park paving	15,000	Park Millage
	Pettit Park fire rings, pads & water	3,000	Park Millage
	Pettit Park pavilion	3,500	Park Millage
	Pettit Park playground	4,000	Park Millage
	Improving park signs, grills, picnic tables	3,000	Park Millage
	Softball field	20,000	Park Millage
	Basketball courts	4,000	Park Millage
	Improve Shamrock Park pavilions	5,000	Park Millage
	Soccer field improvements	5,000	Park Millage
		\$62,500	
2011-2012			
	Annual paving projects	20,000	Park Millage
	Annual playground improvements	4,000	Park Millage
	Improving park signs, grills, picnic tables	3,000	Park Millage
	Softball field	20,000	Park Millage
	Soccer field improvements	5,000	Park Millage
	Develop dam park	1,000	Park Millage
	Rail Trail land acquisition and development	4,500	Park Millage
	Parks land acquisition and development	4,500	Park Millage
	Design community center	15,000	Grant Funds
		\$77,000	
2012-2013			
	Annual paving projects	20,000	Park Millage
	Annual playground improvements	4,000	Park Millage
	Improving park signs, grills, picnic tables	3,000	Park Millage

	Softball fields	20,000	Park Millage
	Soccer field improvements	5,000	Park Millage
	Develop dam park	1,000	Park Millage
	Shuffleboard courts	3,000	Park Millage
	Rail Trail land acquisition and development	3,000	Park Millage
	Parks land acquisition and development	3,000	Park Millage
	Community center	1,000,000	Grant Funds
		\$1,062,000	
2013-2014			
	Annual paving projects	20,000	Park Millage
	Annual playground improvements	4,000	Park Millage
	Improving park signs, grills, picnic tables	3,000	Park Millage
	Softball fields	20,000	Park Millage
	Soccer field improvements	5,000	Park Millage
	Develop dam park	1,000	Park Millage
	Shuffleboard courts	3,000	Park Millage
	Rail Trail land acquisition and development	3,000	Park Millage
	Parks land acquisition and development	3,000	Park Millage
	Renovate train depot	\$150,000	Grant Funds
		\$212,000	
2014-2015			
	Annual paving projects	20,000	Park Millage
	Annual playground improvements	4,000	Park Millage
	Improving park signs, grills, picnic tables	3,000	Park Millage
	Softball fields	20,000	Park Millage
	Soccer field improvements	5,000	Park Millage
	Develop dam park	1,000	Park Millage
	Rail trail land acquisition and development	4,500	Park Millage
	Parks land acquisition and development	4,500	Park Millage
		\$62,000.00	

Appendices

- A. List of students
- B. Public meeting announcement
- C. Mailing list
- D. Survey

Appendix A: List of Students

CMU Students enrolled in RPL 420, *Comprehensive Planning and Facility Design for Leisure*, during the spring semester, 2009, worked in the following groups to compile various elements of this master plan.

Community Description

Andrew Jones
Adam Muszynski
Laura Tune
Alex Zegarzewski

Facility Inventory

Nathan Gregorich
Shane Hoover
Emily Lafollette
Leslie Skiera

Program Inventory

Jessica Kilpatrick
James Steiger II
Krista Vrooman
Leah Ware

Standards

Jamie Franklin
Rebecca Garbutt
Dereck Grossett

Survey

Amanda Binell
Matthew Ellis
Hannah Flood
Brooke Matthews

Accessibility

Katelyn Butsky
Timothy Dejong
Ronald Ekdahl
Allen Ollenburger

Public Meeting

Brett Allen
Ted Grossnickle
Kevin Julien
Ashley Lozon
Barbara Matthews
Rebecca Ouvry

Faculty of the Department of Recreation, Parks and Leisure Services Administration at CMU express their appreciation for this opportunity to engage students in an applied, hands-on learning activity.

Appendix B: Public Meeting Announcement

FOR IMMEDIATE RELEASE

Contact: Amanda Green, Director
City of Clare Parks and Recreation Department
989-386-7541 X 213

Clare Residents Invited to Participate in Parks and Recreation Planning

During the next few months, the City of Clare Parks & Recreation Department will be working to update and revise the Master Plan for Parks and Recreation for the City of Clare. The City of Clare Parks & Recreation board invites all interested citizens of Clare to participate in this process by completing an interest survey. The parks and recreation survey, included with the February City of Clare newsletter, will be delivered during mid February. Households that do not receive the City Newsletter can still participate in the survey in one of several ways. Citizens may obtain a copy of the survey by calling or dropping by City Hall. The survey is also available online through a link to the City of Clare web page at <http://www.cityofclare.org>. This survey is only one of the ways that public input is being gathered. In addition to the survey, a public meeting is scheduled for Monday, February 23 at 6:00 p.m. at the Clare High School cafeteria.

Information from the survey and from this public meeting will be used by the parks and recreation board to establish a plan of action for parks and recreation for the City. The revised Master Plan will provide a framework for decision making about improving parks, recreation areas and leisure opportunities in the City of Clare.

It is important that a wide variety of people participate in the survey and public meeting and that input of all segments of the population be heard. Whatever your leisure interests may be, your input is wanted. Bikers, tennis players, hockey players, walkers, dancers, seniors, volleyball players, skateboarders, parents, soccer players, fishermen, nature lovers, skaters, campers, football players, artists, picnic lovers, playground users, softball and baseball players, and just plain park users.

Upon completion of the master planning process, the revised Parks & Recreation Master Plan will be submitted to the Michigan Department of Natural Resources. By having an approved Master Plan on file with the DNR, the City of Clare also qualifies for a number of grant programs that can be used to improve the quality of life of Clare citizens by enhancing our parks and leisure resources.

The City of Clare is receiving support and assistance in the update of the Master Plan by a class of students from Central Michigan University. These students are parks and recreation majors who are enrolled in a course titled "Planning and Facility Design for Leisure." Speaking of his students, instructor Al Ellard, says "this is a great opportunity for these student to learn by doing. The fact that Clare is so close to CMU makes this a perfect opportunity for students to get hands-on, real world experience in a way you just cannot duplicate in the classroom." For the next two months over thirty CMU students will be assessing the condition of Clare's parks, collecting and analyzing survey data, providing leadership for the public meeting, and writing most of the final Master Plan document.

Appendix C: Letter of Invitation and Mailing List

February 13, 2009

Dear fellow citizen:

During the spring of 2009 the City of Clare Parks and Recreation Advisory Board will be updating the Master Plan for Parks and Recreation for the City of Clare. The Master Plan for Parks and Recreation serves as a planning and decision-making framework that will guide decisions about the development and improvement of parks and recreation amenities for the next five years. In addition, updating the Parks and Recreation Master Plan will make the City of Clare eligible for a number of grant opportunities that can be used to enhance the parks and recreational opportunities available to the citizens of Clare.

We are asking you to attend a public meeting on Monday, February 23, 2009 at 6:00 p.m. at the Clare High School Cafeteria.

You have been personally invited because you are a key member of the Clare community whose input we are seeking in this planning process. We have tried to identify the many individuals, organizations, and groups in the community whose interests may intersect with the provision of quality parks and recreation services. By inviting a wide ranging group of community members we are seeking to assure that the interests of all citizen groups are considered in this planning process.

Thank you for your leadership in our community and we look forward to hearing from you on February 23.

Sincerely,

Amanda Green, Director
Parks and Recreation

President, Clare Rotary Club
c/o Doherty Hotel
604 North Mc Ewan
Clare, MI 48617

Greg McMillan, Superintendent
Clare Public Schools
201 E. State Street
Clare, MI 48617

Sheila M. Bissonnette, Director
PMDL
185 E. Fourth Street
Clare, MI 48617

President, Clare Kiwanis Clubs
c/o Doherty Hotel
604 North Mc Ewan
Clare, MI 48617

Don Kolander, Director
Clare County Parks & Recreation
225 W. Main St
P.O. Box 438
Harrison, MI 48625

Extension 4-H Youth Agent
County Building
P.O. Box 439
Harrison, MI 48625-0439

Cy Tope
IBT Title Clare County
404 N. Mc Ewan
Clare, MI 48617

Lori Enos
Pioneer High School
670 Ann Arbor Trail
Clare, MI 48617

Eagles Aerie 2977
11227 S. Grant Ave.
Clare, MI 48617

ATTN: Pastor and Youth Minister
Clare United Methodist Church
105 East 7th Street
Clare, MI 48617

Dwayne Miedzianowski
Police Chief
City of Clare
207 West Fifth Street
Clare, MI 48617

President, Lions Club
c/o Doherty Hotel
604 North Mc Ewan
Clare, MI 48617

Pastor Jim Young
Clare Church of the Nazarene
10160 South Grant Avenue
Clare, MI 48617

Mike Sargent, Fire Chief
City of Clare
202 West Fifth Street
Clare, MI 48617

Masonic Lodge
504 Jackson
Clare, MI 48617

Pastor, Doug Blackwell
First Baptist Church
302 Wilcox Parkway
Clare, MI 48617

Lori Schuh, Executive Director
Clare County Convention &
Visitors Bureau
P.O. Box 226
Clare, MI 48617

Moose Lodge 2268
1890 E. Ludington Dr.
Clare, MI 48617

St. Cecilia Church & School
Business OFC
106 West Wheaton Avenue
Clare, MI 48617

Clare & Gladwin County
Council on Aging
101 W. Michigan Ave
Farwell, MI 48622

VFW Post 5738
145 Wilcox Parkway
Clare, MI 48617

Jeannie Mishler, Principal
Clare Primary School
205 E. Wheaton Ave
Clare, MI 48617

Clare Chamber of Commerce
429 N. Mc Ewan St.
Clare, MI 48617

John Wolf, County Commissioner
225 West Main Street
Harrison, MI 48625

Steve Newkirk, Principal
Clare Middle School
209 E. State Street
Clare, MI 48617

Mid Michigan Community Action
Agency
Gary Gilbert, Executive Director
1574 E. Washington
P.O. Box 768
Farwell, MI 48622

Lori Schuh
Downtown Development
Authority
Clare City Hall
202 W. Fifth Street
Clare, MI 48617

Lee Turner, Principal
Clare High School
201 E. State Street
Clare, MI 48617

Jim Allen
412 Wilcox Parkway
Clare, MI 48617

Dick Acker, Airport Manager
Clare City Hall
202 W. Fifth Street
Clare, MI 48617

Bob Bonham,
Director of Public Works
Clare City Hall
202 W. Fifth Street
Clare, MI 48617

Kay Haven, City Clerk
Clare City Hall
202 W. Fifth Street
Clare, MI 48617

Pat Humphrey, Mayor
City of Clare
711 North Rainbow Drive
Clare, MI 48617

Renee Crawford
11423 North Mission
Clare, MI 48617

Steven Kingsbury
421 Forest
Clare, MI 48617

Bill Horwood
City Commission
425 Wilcox Parkway
Clare, MI 48617

Tom Hurdle
Clare Middle School
209 E. State Street
Clare, MI 48617

Mary Schuelte
Clare Middle School
209 E. State Street
Clare, MI 48617

Bruce Hales
Clare Middle School
209 E. State Street
Clare, MI 48617

Dave Gould
Clare Primary School
205 E. Wheaton Avenue
Clare, MI 48617

Jamie Winkler
Clare High School
201 E. State Street
Clare, MI 48617

Al White, Liaison Officer
Clare Public Schools
201 E. State Street
Clare, MI 48617

Director of Operations & Maint.
Clare Public Schools
201 E. State Street
Clare, MI 48617

Michael Schubart, Athletic
Director
Clare High School
201 E. State Street
Clare, MI 48617

George Gilmore
Clare High School
201 E. State Street
Clare, MI 48617

Denny Purkis
Clare High School
201 E. State Street
Clare, MI 48617

Rod & Gun Club
10844 E. Eberhart
Clare, MI 48617

Mrs. Pat Snyder
590 Wilcox Parkway
Clare, MI 48617

John Merillat, President
Clare Little League
10020 S. Grant Ave
Clare, MI 48617

Mr. John Green
Rocket Football
408 John R Street
Clare, MI 48617

Ben Walters
Planning Commission
1451 Woodlawn Ave.
Clare, MI 48617

Jerry Forsberg
Planning Commission
201 W. First, #1E
Clare, MI 48617

Dave Prawdzik
Planning Commission
411 John R Street
Clare, MI 48617

Jan Winter
Planning Commission
713 N. Rainbow Dr
Clare, MI 48617

Karla Swanson
Planning Commission
712 N. Rainbow Dr
Clare, MI 48617

Darren Acton
Planning Commission
130 Woodlawn Ave.
Clare, MI 48617

Rebecca Terpening
Irish Festival Committee
P.O. Box 294
Clare, MI 48617

Glenda Carmoney
Planning Commission
504 Forest
Clare, MI 48617

John Kline
Planning Commission
120 W. Wheaton Ave.
Clare, MI 48617

Elaine Demasi
Planning Commission
417 Wilcox Pkwy
Clare, MI 48617

Pat McCrady, President
Clare County Arts Council
502 E. Sixth Street
Clare, MI 48617

Dave Waite, President
Friends of Pere Marquette Rails-
Trails
6030 Emerson Ct
Midland, MI 48640

Jon Ringelberg
P&R Advisory Board
5986 E. Dover
Clare, MI 48617

Marian Matyn
P&R Advisory Board
1469 Woodlawn Ave
Clare, MI 48617

Carol Santini
P&R Advisory Board
603 Glendale
Clare, MI 48617

Bill Carlson
P&R Advisory Board
646 George Street
Clare, MI 48617

Doug Randle
P&R Advisory Board
314 E. Second
Clare, MI 48617

Kelly Koch
P&R Advisory Board
1461 Woodlawn
Clare, MI 48617

Rose Michels
P&R Advisory Board
416 Forest
Clare, MI 48617

Jays Sporting Goods
8800 S. Clare Ave
Clare, MI 48617

Horizon Senior Living
Activities Director
1324 Vinewood Ave.
Clare, MI 48617

Prestige Place
Activities Director
684 Ann Arbor Trail
Clare, MI 48617

Gateway Lanes and Lounge
1410 N. Mc Wan St
Clare, MI 48617

Firefly Golf Links
7795 S. Clare Ave.
Clare, MI 48617

Joe Phillips
Clare Softball League
1492 Columbus Dr.
Farwell, MI 48622

John Koch
City Commission
1461 Woodlawn Ave
Clare, MI 48617

Jean McConnel
City Commission
731 Eastwood Dr
Clare, MI 48617

Tom Koch
City Commission
206 W. Seventh St
Clare, MI 48617

Ken Hibl
City Manager
202 W. Fifth Street
Clare, MI 48617

Appendix D: Survey

Clare Parks & Recreation Survey

Dear Resident:

The Parks & Recreation Board is in the process of updating the Parks & Recreation Master Plan for the City of Clare. Your participation in this planning process is needed. By completing and returning this questionnaire you will be providing valuable input to the Parks & Recreation Board that will be used in decision-making about parks and recreation facilities and services in Clare. Your participation in this survey is voluntary and your responses will be kept confidential.

If you would prefer, you can complete this survey online. Go to www.cityofclare.org and look for the link to **Parks and Recreation Survey**.

1. Are you a resident of the City of Clare? Yes No

2. How many persons in the following age groups reside in your household?

Pre-school (under 5)	_____	Adults (20-40)	_____
Young Children (6-12)	_____	Adults (41-55)	_____
Teens (13-19)	_____	Adults (over 55)	_____

3. Which of the following statements best characterizes your family's use of city parks?

Regular users Occasional users Infrequent users Not users

4. Please check all of the Clare Parks that you or a member of your household have used during the past year

Stamina Stadium	[]	McIreland Nature Trail	[]	Brookwood Park	[]
Pettit Park	[]	Shamrock Park	[]	Airport Soccer Fields	[]
Pere Marquette Rail Trail	[]	Maple Street Park	[]	City Park	[]

5. Which of the Parks listed in #4 above does your family use the most? _____

6. Which of the Parks listed in #4 above is closest to your home? _____


7. Please indicate your agreement/disagreement with each of the following statements.

	Strongly Agree	Agree	Undecided	Disagree	Strongly Disagree
The City of Clare has an adequate number of Parks to meet the current needs of the population for park space.					
Clare city parks are a point of pride in the community					
There should be increased emphasis on instructing people how to enjoy different leisure and recreation activities					
There should be an increased emphasis on providing activities that the whole family can participate in.					
There should be an increased emphasis on providing recreation for youth in the community.					
There should be increased emphasis on additional development of existing Clare parks.					
I feel it is safe to walk or bike from my home to the nearest city park.					
There should be increased emphasis on providing recreation programs and services to senior adults in the community.					
Clare city parks make a positive contribution to the quality of life in Clare					

8. Need for New Recreation Areas & Facilities

Please indicate the priority you think the City of Clare should place on developing the following kinds of new recreation areas & facilities.	Lowest	Somewhat low	Neither high or low	Somewhat high	Highest
Sport fields (baseball, softball, soccer, football, etc.)					
Public Campground					
Trails (Bicycle paths, exercise, nature, hiking, walking)					
Picnic areas & Pavilions					
Playgrounds					
Swimming Pool					
Sledding hill					
Sport courts (basketball, volleyball, etc)					
Permanent skateboard park					
Indoor recreation/community center					
Other: _____					
Other: _____					
Other: _____					

9. Recreation Programs and Services

Please place a check mark  in the appropriate boxes to indicate the age group of persons in your household who might have an interest in participating in each of the types of activities listed below. If you do not feel there would be any interest in the activity, leave the box blank. **Example:** For the activity, “Underwater basket weaving,” if you feel your elementary-aged children and teens (youth) would be interested, but you (adults) are not interested, you would place check marks in the boxes indicating children, and youth, but not adults.

EXAMPLE	children 5-12	youth 13-19	adults 20-55	adults 56+
<i>Underwater Basket weaving</i>	<input checked="" type="checkbox"/>	<input checked="" type="checkbox"/>	[]	[]
Cultural Arts Activities	children 5-12	youth 13-19	adults 20-55	adults 56+
Dance, theatre, drama	[]	[]	[]	[]
Arts, crafts	[]	[]	[]	[]
Music	[]	[]	[]	[]
Other_____	[]	[]	[]	[]
Sport, Athletics, Aquatics	children	youth	adults	seniors
Sport skill instruction	[]	[]	[]	[]
Sport leagues & tournaments	[]	[]	[]	[]
Ice skating	[]	[]	[]	[]
Swimming	[]	[]	[]	[]
Other_____	[]	[]	[]	[]
Outdoor Recreation	children	youth	adults	seniors
Camping	[]	[]	[]	[]
Canoeing	[]	[]	[]	[]
Hiking/backpacking	[]	[]	[]	[]
Winter activities	[]	[]	[]	[]
Other_____	[]	[]	[]	[]
Self-Improvement/Wellness	children	youth	adults	seniors
Aerobics/fitness activities	[]	[]	[]	[]
Computer instruction	[]	[]	[]	[]
Healthy eating/dieting	[]	[]	[]	[]
Other_____	[]	[]	[]	[]
Social Recreation	children	youth	adults	seniors
Summer day camps	[]	[]	[]	[]
Community-wide special events	[]	[]	[]	[]
Family activity programs	[]	[]	[]	[]
Dances/socials	[]	[]	[]	[]
Trips to see entertainment/sports	[]	[]	[]	[]
Other_____	[]	[]	[]	[]

10. How do you usually get information about community activities in Clare? (Check all that apply.)

- | | | | |
|--------------------|--------------------------|------------------|--------------------------|
| City news letter | <input type="checkbox"/> | The Web/Internet | <input type="checkbox"/> |
| School Handouts | <input type="checkbox"/> | Word of Mouth | <input type="checkbox"/> |
| Cable/Satellite TV | <input type="checkbox"/> | Radio | <input type="checkbox"/> |
| Posters & flyers | <input type="checkbox"/> | Newspaper | <input type="checkbox"/> |
| Email from city | <input type="checkbox"/> | Other_____ | <input type="checkbox"/> |

11. Do you feel that there are any groups of citizens in the Clare community who do not have adequate access to recreation programs and activities? Yes___ No___

If yes, what groups_____

12. Did you know that The City of Clare has a Parks & Recreation Board that meets on the 3rd Thursday of every month and invites public participation?

Yes No

Thank you for your time and participation!

To return this survey by mail, fold and add postage.

If you prefer, you can drop the survey in the water bill payment box at city hall.

-----fold here-----

Place
Stamp
Here

City of Clare
Parks & Recreation Survey
202 W. Fifth Street
Clare, MI 48617

Additional Documents for Completion and Approval of Plan

Minutes from Advisory Board Recommending Plan Approval to City Commission
Notice of Availability of Draft Plan and Public Meeting
Proof of Publication for Notice of Availability of Draft Plan and Public Meeting
Minutes from Public Meeting and Plan Approval by City Commission
Resolution 2010 – 015, Approving Five Year Master Plan
Final Plan Submission Letters to County and Regional Planning Agencies
Community Park, Recreation, Open Space and Greenway Plan Certification Checklist

Minutes from Advisory Board Recommending Plan Approval to City Commission

Clare Parks & Recreation Advisory Board Meeting Minutes January, 2010 meeting

1. CALL TO ORDER. Santini called the meeting of the Clare Parks & Recreation Advisory Board to order at approximately 5:30p.m. at Clare City Hall and subsequently led the Pledge of Allegiance. Board members present: Matyn, Ringelberg, Carlson, Randle, and Santini. Others present: Parks and Recreation Director, Amanda Green; both City Manager, Ken Hibl and city resident, Kelly Koch arrived during the duration of the meeting.
2. APPROVAL OF MINUTES. Matyn moved to accept the November minutes and Randle seconded. All were in favor.
3. APPROVAL OF AGENDA. Randle moved to approve the agenda and Carlson seconded. All were in favor.
4. PUBLIC COMMENT. None
5. OLD BUSINESS.
 - a. No Pets Policy. Green gave an update that the No Pets Policy, which was previously reviewed during the October and November, 2009 PRAB meetings had completed the formal process of enactment and addition to our current ordinances. The first reading and public hearing for the proposed ordinance revision, as prepared by the City Attorney, was held on Monday, December 21, 2009. No public comment was received regarding the ordinance change. The second reading and adoption of the revision was approved by City Commission on Monday, January 4, 2010, with the updated ordinance to go into effect 15 days after on January 19, 2010.
 - b. Pettit Park Shower Addition Project. Green gave an update to the board that the proposals received by the City for design and plans for the shower addition were sent to the City Commission Monday, December 21, 2009, at which time the Commission approved the acceptance of the proposal from Lapham's for an amount not to exceed \$2,200. Green further discussed with the board the preliminary designs Lapham came up with and inquired about what the Board's recommendations were for features of the new facility. Carlson made a motion to support bathroom design plan #3 with secondary support for #4 depending on the cost difference. Additionally, Carlson's motion included that the facility should have the following features: the floor should be of the concrete sort with a slip resistant surface, the interior walls should be made of block, there should be no electrical or beautification stations in the individual stalls, the doors should have key code entry systems, and the water should be controlled by a coin operated meter. Matyn seconded the motion, and all were in favor.

- c. Finalization of Master Plan 2010-2015. Green gave the board an update on the finalization of the Master Plan to inform the board that since the November 2009 meeting, Dr. Ellard caught an omission from the draft plans capital improvements schedule that included the projects that are anticipated to be grant funded. These projects include the design and construction of a community center and renovation and restoration to the train depot, as both discussed throughout the text of the 2010-2015 plan. Subsequently, funding for these projects would be listed as being through grant funds and therefore would not otherwise affect the existing millage fund of about \$62,000-\$66,000 annually. Matyn made a motion to correct the error and include the corrected capital improvement schedule in the plan that shows that the train depot and a community center are in fact part of the final document of the Master Plan 2010-2015 and submit the document for review by the City Commission and submission to the DNR. Randle seconded the motion, and all were in favor.
6. NEW BUSINESS
 - a. Potential Soccer Properties Review. With the assistance of suggestions from soccer supporter, and the help of PRAB member Jon Ringelberg, a listing and initial review of potential properties was conducted. Each property was assigned an identification letter and then reviewed for potential price, size, location, development needs and ease of layout in order to get a total rating score. Benefits and Negatives, and the possibility of wetlands were also reviewed. The board was provided the overall review, with the top property receiving a score of 23. Properties ranking 2 and 3 both had a score in the 20's, with properties 4 and 5 scoring 19.5. Matyn made a motion in support of further exploring the options of the top five scoring properties based on the initial review. Ringelberg seconded the motion, and all were in favor.
 - b. Upon completion of the agenda items, the board subsequently brought up the topic of maintenance of the rail trail regarding winter snow removal for year-round use and accessibility. Discussion resulted that use of the winter trail should be for both walkers and cross country skiers. Matyn made a motion to recommend that the City clear half of the trail throughout its entire linear distance to allow for walkers on the cleared side and cross country skiers on the side with the accumulated snow.
7. PARKS AND RECREATION DIRECTOR'S REPORT:
 - a. Green's gave a bulleted report of past events, including the Christmas Open House, North Pole Calling, Santa's Mailbox, and the Teen's New Year's Eve Games Challenge. Additionally, she reviewed the work to restart the teen group and upcoming Senior events
8. ADJOURNMENT. The meeting adjourned at approximately 7:06 pm with Carlson making the motion and Randle seconding. All were in favor of adjournment.

Notice of Availability of Draft Plan and Public Meeting

PUBLIC NOTICE

The proposed draft of the Five Year Recreation Master Plan for the City of Clare will be available for public review and comment, Monday through Friday, 8 am to 5 pm. through March 1, 2010, at the City of Clare City Clerk's office, 202 West Fifth Street, Clare, Michigan.

Interested citizens may also view the draft plan at Pere Marquette Public Library, 185 East Fourth Street, Clare, Michigan, and online at www.cityofclare.org. The Clare City Commission encourages public participation and will accept comments at the hearing or in writing if the written comments are received by the City Clerk not later than 5 p.m. on the date of the public hearing and review for adoption which is proposed for March 1, 2010.

Diane Schmidt
City Clerk

Published January 27, 2010

***Proof of Publication for Notice of Availability of Draft Plan and
Public Meeting***

Minutes from the Public Meeting and Plan Approval by City Commission

Clare City Commission Meeting Minutes, March 1, 2010

The regular meeting of the Clare City Commission was called to order by Mayor Pat Humphrey in the Commission Chambers, at 6:00 p.m., who led the Pledge of Allegiance. Present were: Commissioners Bill Horwood, Pat Humphrey, John Koch, Tom Koch and Jean McConnell. Absent: None. Also present were Ken Hibl, City Manager; Steve Kingsbury, Treasurer and Finance Director; Bob Bonham, Director of Public Works; John Holland, Waste Water Treatment Supervisor; Dwayne Miedzianowski, Chief of Police; Lori Schuh, Main Street Manager; Dick Acker, Airport Manager; Amandagrace Green, Parks and Recreation Director, and Diane Schmidt, City Clerk.

2. CONSENT AGENDA:
Moved by Commissioner Jean McConnell second by Commissioner Bill Horwood to approve the items listed with an asterisk (*) (Minutes, Agenda, Communications, Approval of Bills) that are considered to be routine by the City Commission. Ayes: All. Nays: None. Absent: None. *Motion Carried.*
3. *APPROVAL OF MINUTES:
Consent Agenda Approval.
4. *APPROVAL OF AGENDA:
Consent Agenda Approved.
5. PUBLIC COMMENT: - The new President of Middle Michigan Development Corporation (MMDC), Mr. Brian Anderson, was introduced by Kathy Methner of MMDC.
6. OLD BUSINESS/UNFINISHED BUSINESS: None.
7. NEW BUSINESS:
 - A. IDC PRESENTATION AND RENEWAL OF IDC AGREEMENT
Jim Allen, President of the Industrial Development Corporation (IDC), Kathy Methner, of Middle Michigan Development Corporation, and Craig Goodrich of Gourdie Fraser & Associates presented an Industrial Park Study presentation to City Commissioners. Jim Allen recommended that the City and IDC move forward to apply for grant funds for development of a proposed industrial park at the north end of Clare.

The IDC Power Point presentation was presented to the Clare City Planning Commission at its January 2010 meeting. The Planning Commission unanimously recommended approval of the IDC's request to pursue funding sources to determine whether its proposal for industrial expansion in the City is affordable. The Planning

Commission succinctly and clearly stipulated that any such development must be affordable/not cause an undue fiscal hardship or burden on the residents and businesses of the City.

Kathy Methner recommended certifying the industrial park regardless of location and notifying the EDA by the April 1, 2010 deadline of the IDC's and City's intention to submit a grant application to East Michigan Council of Governments while economic development administration funds are available.

After a lengthy discussion, Commissioner Jean McConnell made the motion second by Commissioner Bill Horwood to approve a recommendation that the Clare Industrial Development Corporation and the City proceed to apply for grant funds for the proposed development of an industrial park at the north end of Clare, by adoption of Resolution 2010-012. Roll call vote: Yeas: Commissioners Bill Horwood, Pat Humphrey, John Koch, and Jean McConnell. Nays: Tom Koch. Absent: None. *Motion Approved.*

Motion by Commissioner Jean McConnell second by Commissioner Bill Horwood to renew the formal business agreement between the City and the IDC, by adoption of Resolution 2010-013. Roll call vote: Yeas: Commissioners Bill Horwood, Pat Humphrey, John Koch, and Jean McConnell. Nays: Tom Koch. Absent: None. *Motion Approved.*

B. OPERATION OF OFF-ROAD RECREATION VEHICLES (ORVs) WITHING CITY LIMITS

The Parks & Recreation Advisory Board discussed the matter at its scheduled meeting on February 18th but due to a lack of quorum, the Board could not provide a formal recommendation. However, the consensus of the three members present was that the prohibition of ORVs in Clare should not be lifted.

The Traffic & Safety Committee held a meeting on February 23rd, 2010 to discuss the matter. The Committee unanimously recommended that the prohibition remain in place.

Motion by Commissioner Bill Horwood second by Commissioner Jean McConnell continue prohibition of ORV operation within city limits and adopt an ordinance prohibiting ORV operation within city limits, by adoption of Resolution 2010-014. Roll call vote: Yeas: Commissioners Bill Horwood, Pat Humphrey, Tom Koch, and Jean McConnell. Nays: John Koch. Absent: None. *Motion Approved.*

C. APPROVAL OF PARKS & RECREATION MASTER PLAN

The City's Five Year Parks & Recreation Master Plan has expired. The Parks & Recreation Board, with the outstanding assistance and guidance of Central Michigan University, commenced renewal of the Plan in January 2009. The proposed new Plan

has been reviewed by the Parks & Recreation Board and required notice of the Plan has published. The Plan now requires consideration and approval of the City Commission to facilitate its submittal to the Michigan Department of Natural Resources and Environment.

Motion by Commissioner John Koch second by Commissioner Bill Horwood to open a public hearing to receive comment regarding a proposed five year Parks and Recreation Master Plan. Roll call vote: Yeas: Commissioners Bill Horwood, Pat Humphrey, Tom Koch, John Koch, and Jean McConnell. Nays: None. Absent: None. *Motion Approved.*

Public Comment: None

Motion by Commissioner Jean McConnell second by Commissioner John Koch to close the public hearing. Roll call vote: Yeas: Commissioners Bill Horwood, Pat Humphrey, Tom Koch, John Koch, and Jean McConnell. Nays: None. Absent: None. *Motion Approved.*

Motion by Commissioner Bill Horwood second by Commissioner Jean McConnell to approve the five year Parks and Recreation Master Plan by adoption of Resolution 2010-015. Roll call vote: Yeas: Commissioners Bill Horwood, Pat Humphrey, Tom Koch, John Koch, and Jean McConnell. Nays: None. Absent: None. *Motion Approved.*

D. RENEWAL OF CEMETERY MAINTENANCE CONTRACT

Motion by Commissioner Bill Horwood second by Commissioner Jean McConnell to approve renewal of the cemetery maintenance services contract with AWOL Lawn Services, by adoption of Resolution 2010-016. Roll call vote: Yeas: Commissioners Bill Horwood, Pat Humphrey, John Koch, Tom Koch, and Jean McConnell. Nays: None. Absent: None. *Motion Approved.*

E. INTERGOVERNMENTAL BROADBAND SERVICES AGREEMENT

Motion by Commissioner John Koch second by Commissioner Jean McConnell set aside this agenda item to the March 15, 2010 City Commission meeting. Roll call vote: Yeas: Commissioners Bill Horwood, Pat Humphrey, John Koch, Tom Koch, and Jean McConnell. Nays: None. Absent: None. *Motion Approved.*

F. BOARD & COMMITTEE APPOINTMENTS – PARKS AND RECREATION BOARD

The City Commission has been discussing the appointment of membership to the City's various boards and committees for approximately six weeks without resolution. A request was made at the most recent Commission meeting to place the appointment of membership to the Parks & Recreation Advisory Board on the March 1st agenda for possible consideration and appointment.

This matter is now once again left to the discretion of the City Commission in respect to action. The Clare Ordinance Codes pertaining to the appointment of members to the Parks & Rec Board specifically stipulates that the Mayor appoints qualified individuals to this Board with confirmation of the City Commission. Consequently, making an appointment to this particular Board without appointment(s) by the Mayor would be in violation of this particular ordinance code.

Motion by Commissioner Jean McConnell second by Commissioner Bill Horwood to throw out a motion approved at the January 18, 2010, which held in abeyance all current and future board and committee appointments. Roll call vote: Yeas: Commissioners Bill Horwood, Pat Humphrey, John Koch, Tom Koch and Jean McConnell. Nays: None. Absent: None. *Motion Approved.*

Motion made by Commissioner Tom Koch second by Commissioner Jean McConnell suggesting Mayor Humphrey nominate Kelly Koch to the Parks and Recreation Board. Roll call vote: Yeas: Commissioners Bill Horwood, John Koch, and Tom Koch. Nays: Pat Humphrey, and Jean McConnell. Absent: None. *Motion Carried.*

Mayor Humphrey did not nominate Kelly Koch to the Parks and Recreation Board.

8. TREASURER'S REPORT

Treasurer's report was received.

9. MAIN STREET MANAGER REPORT

Main Street Manager's Report was received.

10. CITY MANAGER'S REPORT

Depot Steering Committee Meeting. We held our first steering committee meeting on February 17, 2010. The meeting was well-attended, and we set wheels in motion to develop an architectural site plan (MMCAA is providing the architect services at no cost to us, as they have a certified architect on staff); to develop some preliminary construction/rehabilitation costs (complements of Mr. Bob Meister of Design Builders, who has volunteered these services) to allow us to determine a more-comprehensive cost of this project; and have contacted a moving company from Muskegon to provide us moving costs. We are scheduled to meet next on March 10th to review preliminary architectural plans and other preliminary cost estimates and decide what direction we take in respect to fund-raising.

Well #9. After a lengthy meeting and discussion with DRNE officials and our well contractor in Clare approximately three weeks ago, we have finally attained approval from MDRNE to bring our new Well #9 on line.

Sanitary Sewer Pump Station #7. During the course of performing routine maintenance on the pumps in Lift Station #7 (the most westerly pump station on Witbeck Drive, which not only services Witbeck Drive but also collects all the sanitary sewer flows north of the Tobacco River), one of the pump guide poles/rails (two parallel metal poles to which the pumps are attached and allow us to raise and lower the pumps within the pump stations) dislodged from its foundation. The rail replacement (we replaced the guide rails for both pumps due to their corroded condition) has been completed. However, we continue to have “issues” with the pumps at this site and are troubleshooting to determine whether the pumps need replacement.

Assessing Services. As the Commission knows, we contract for assessing services with BS&A (the firm that is also our software management provider for nearly all of our automated municipal management programs and systems), and our assessor of record, Mr. Dan Kirwin, is an employee of BS&A. Our relationship with BS&A (both for assessing services and software programs and support) has been excellent. Due to restructuring within BS&A, Dan will be replaced by Ms. Edie Hunter (also a BS&A employee and certified assessor) commencing in April. We anticipate this will be a very smooth transition and essentially transparent to our customers as Edie has long been Dan’s “back-up” on the one day per week that Dan could not be in Clare (and there were a considerable number of days that Dan’s BS&A duties precluded him from accomplishing assessing services for us in 2009 – to the point that I raised the issue with BS&A management, thus in part the reason for the pending change to Edie). We will likely still see Dan in Clare on occasion, but Edie will become our assessor of record; we (the City Staff) are very comfortable with this change.

KASL.Net. KASL.Net, a wireless company from Alma that purchased Great Lakes Computers in Clare approximately two years ago, is presently our Internet Service Provider (ISP). We have an expired contractual agreement with KASL.Net that allows them to place their primary antenna array for wireless services on our water tower in return for providing us internet services, which is one of our primary means of communication and data/information sharing between our City departments. We also pay KASL.Net for providing internet services for three of our City Commissioners (Commissioner Bill, Mayor Pro Tem Jean, and Mayor Pat). KASL.Net is being purchased by ISP Management of Alma. We (Steve, Diane, John Holland, and I) met with a representative of ISP Management yesterday (Feb 23rd) regarding the renewal of the expired contractual agreement with KASL.Net. As the City intends to change ISPs concurrent with our connectivity to broadband (the Clare County/RESD initiative we have discussed with the City Commission), we informed ISP Management that it is our desire to change our current relationship to a monthly payment schedule versus our current “barter” arrangement. ISP Management has agreed to our proposal, thus the City Commission will likely be presented with a proposal for a new contractual agreement with this company within the next month.

MDOT – Bay Region Invitation. We've received an invitation for the Bay Region annual Transportation Information & Input Meeting. We have routinely attended this meeting each year and found it to be very informative. I ask that any commissioners that desire to attend this meeting inform Diane by March 16th to allow us to RSVP prior to the requested reservation deadline.

CDBG Application. We submitted a grant application to the Michigan Economic Development Corporation for a streetscape extension along West Fourth Street and Beech Street; the DDA is funding the local match for the project. We're advised that MEDC only has \$14M for this grant round (compared to \$44M last year – but we were not eligible to apply last year due to the fact we were not on the state's low/moderate income listing), thus competition for the reduced amount of grant funds is expected to be highly competitive. Announcement of grant awards is expected in April.

11. *COMMUNICATIONS:
Consent Agenda Approval.

State of Michigan Department of Treasury. The City received notice for participation in the 2010 14-point review program.

City Attorney Correspondence. The City sent out a meeting request to interested parties representing property owners with access to McGuirk Drive, to discuss underground utilities in McGuirk Drive, and responsibility for and access to McGuirk Drive.

12. *APPROVAL OF BILLS:
Consent Agenda Approval.

13. EXTENDED PUBLIC COMMENT: None

14. COMMISSION DISCUSSION TOPIC: Commissioner Tom Koch announced that he will be petitioning for a referendum which states, "any expansion of an industrial park in the City of Clare involving the pledging of the full faith and credit of the City of Clare in the pursuit of grant funding is limited to the purchase of property adjacent to the current existing industrial park property on Industrial Drive at the south end of the city," with the intention of blocking grant applications by the City and IDC for a proposed industrial park at the north end of the City.

John Koch brought up the issue of board and commission appointments because the suggestion of adding an ad hoc member to review applications with the Mayor was discussed at a previous meeting but did not go any further. J. Koch stated that the City administrative staff should not be involved in making appointment recommendations to the Mayor.

Tom Koch requested that the City Manager refrain from being involved with anything that has to do with the City's volunteers. Jean McConnell responded that it is part of the City Manager's job.

Bill Horwood pointed out that Commissioners are not required to approve everything that comes before them.

John Koch requested the Mayor provide reasoning for not reappointing Kelly Koch to the Parks and Recreation Board. Mayor Humphrey's response was that he desires to diversify the Parks and Recreation Board.

15. ADJOURNMENT:

Motion by Commissioner Jean McConnell second by Commissioner Tom Koch to adjourn. Ayes: All. Nays: None. Absent: None. *Motion Approved.*

Meeting adjourned at 8:44 p.m.

Resolution 2010 – 015, Approving Five Year Master Plan

Final Plan Submission Letters to County and Regional Planning Agencies

March 24, 2010

Don Kolander
Clare County Parks and Recreation
225 W. Main St.
Harrison, MI, 48625

Dear Don,

The City of Clare Parks and Recreation Department is pleased to provide for your use and information a copy of our Master Plan for Parks and Recreation 2010 – 2015. The Clare City Commission unanimously voted to approve this plan on March 1, 2010.

As you will see from our plan, the City of Clare Parks and Recreation Department has come a long way since its last plan in 2005. In fact, the City of Clare did not even have a full time position of Parks and Recreation Director at that time, but was excited to create such a position in 2007! Through the hard work and dedication of staff, board and committee members, residents, volunteers, and cooperation with other organizations and entities such as yourself, the quality of life for those in the Clare community has greatly improved.

We look forward to continued communication and potential collaboration on projects as we embark on the beginning of our next five years!

Yours in Parks and Recreation,

Amanda Green
Parks and Recreation Director
City of Clare
(989) 386-7541 x 213
agreen@cityofclare.org

March 24, 2010

Sue Ann Kopmeyer
Isabella County Parks and Recreation
200 N. Main St.
Mt. Pleasant, MI 48858

Dear Sue Ann,

The City of Clare Parks and Recreation Department is pleased to provide for your use and information a copy of our Master Plan for Parks and Recreation 2010 – 2015. The Clare City Commission unanimously voted to approve this plan on March 1, 2010.

As you will see from our plan, the City of Clare Parks and Recreation Department has come a long way since its last plan in 2005. In fact, the City of Clare did not even have a full time position of Parks and Recreation Director at that time, but was excited to create such a position in 2007! Through the hard work and dedication of staff, board and committee members, residents, volunteers, and cooperation with other organizations and entities such as yourself, the quality of life for those in the Clare community has greatly improved.

We look forward to continued communication and potential collaboration on projects as we embark on the beginning of our next five years!

Yours in Parks and Recreation,

Amanda Green
Parks and Recreation Director
City of Clare
(989) 386-7541 x 213
agreen@cityofclare.org

March 24, 2010

East Michigan Council of Governments
3144 Davenport Avenue
Suite 200
Saginaw, MI 48602

To Whom It May Concern:

The City of Clare Parks and Recreation Department is pleased to provide for your use and information a copy of our Master Plan for Parks and Recreation 2010 – 2015. The Clare City Commission unanimously voted to approve this plan on March 1, 2010.

As you will see from our plan, the City of Clare Parks and Recreation Department has come a long way since its last plan in 2005. In fact, the City of Clare did not even have a full time position of Parks and Recreation Director at that time, but was excited to create such a position in 2007! Through the hard work and dedication of staff, board and committee members, residents, volunteers, and cooperation with other organizations and entities such as yourself, the quality of life for those in the Clare community has greatly improved.

We look forward to continued communication and potential collaboration on projects as we embark on the beginning of our next five years!

Yours in Parks and Recreation,

Amanda Green
Parks and Recreation Director
City of Clare
(989) 386-7541 x 213
agreen@cityofclare.org

***Community Park, Recreation, Open Space and Greenway Plan
Certification Checklist***